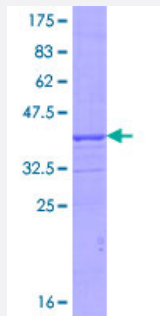


NPEPPS (Human) Recombinant Protein (Q01)

Catalog # H00009520-Q01

Size 10 ug, 25 ug

Applications



Specification

Product Description	Human NPEPPS partial ORF (NP_006301.2, 776 a.a. - 875 a.a.) recombinant protein with GST-tag at N-terminal.
Sequence	SKHGRKAAWKFIKDNWEELYNRYQGGFLISRLIKLSVEGFAVDKMAGEVKAFFESHPPAPSAERTI QQCCENILLNAAWLKRDAESIHQYLLQRKASPPTV
Host	Wheat Germ (in vitro)
Theoretical MW (kDa)	36.74
Interspecies Antigen Sequence	Mouse (96); Rat (98)
Preparation Method	in vitro wheat germ expression system
Purification	Glutathione Sepharose 4 Fast Flow
Quality Control Testing	12.5% SDS-PAGE Stained with Coomassie Blue.
Storage Buffer	50 mM Tris-HCl, 10 mM reduced Glutathione, pH=8.0 in the elution buffer.
Storage Instruction	Store at -80°C. Aliquot to avoid repeated freezing and thawing.
Note	Best use within three months from the date of receipt of this protein.

Applications

- Enzyme-linked Immunoabsorbent Assay
- Western Blot (Recombinant protein)
- Antibody Production
- Protein Array

Gene Info — NPEPPS

Entrez GeneID [9520](#)

GeneBank Accession# [NM_006310](#)

Protein Accession# [NP_006301.2](#)

Gene Name NPEPPS

Gene Alias MP100, PSA

Gene Description aminopeptidase puromycin sensitive

Omim ID [606793](#)

Gene Ontology [Hyperlink](#)

Gene Summary This gene encodes the puromycin-sensitive aminopeptidase, a zinc metallopeptidase which hydrolyzes amino acids from the N-terminus of its substrate. The protein has been localized to both the cytoplasm and to cellular membranes. This enzyme degrades enkephalins in the brain, and studies in mouse suggest that it is involved in proteolytic events regulating the cell cycle. [provided by RefSeq]

Other Designations metalloproteinase MP100|puromycin-sensitive aminopeptidase