

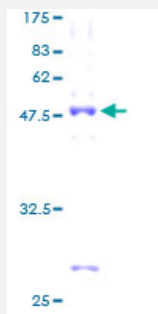
Full-Length

# TBPL1 (Human) Recombinant Protein (P01)

Catalog # H00009519-P01

Size 25 ug, 10 ug

## Applications



## Specification

Product Description	Human TBPL1 full-length ORF ( AAH17559, 1 a.a. - 186 a.a.) recombinant protein with GST-tag at N-terminal.
Sequence	MDADSDVALDILITNVVCFVTRCHLNLRKIALEGANVIYKRDVGKVLMLRKPRITATIWSSGKIICT GATSEEEAKFGARRLARSLLQKLGFQVIFTDFKVVNLAVCNMPFEIRLPEFTKNNRPHASYEPEL HPAVCYRIKSLRATLQIFSTGSITVTGPNVKAVATAVEQYFPVFESRKEIL
Host	Wheat Germ (in vitro)
Theoretical MW (kDa)	46.20
Interspecies Antigen Sequence	Mouse (100); Rat (100)
Preparation Method	<a href="#">in vitro wheat germ expression system</a>
Purification	Glutathione Sepharose 4 Fast Flow
Quality Control Testing	12.5% SDS-PAGE Stained with Coomassie Blue.
Storage Buffer	50 mM Tris-HCl, 10 mM reduced Glutathione, pH=8.0 in the elution buffer.
Storage Instruction	Store at -80°C. Aliquot to avoid repeated freezing and thawing.

## Note

Best use within three months from the date of receipt of this protein.

## Applications

- Enzyme-linked Immunoabsorbent Assay
- Western Blot (Recombinant protein)
- Antibody Production
- Protein Array

## Gene Info — TBPL1

Entrez GeneID [9519](#)

GeneBank Accession# [BC017559](#)

Protein Accession# [AAH17559](#)

Gene Name TBPL1

Gene Alias MGC:8389, MGC:9620, STUD, TLF, TLP, TRF2

Gene Description TBP-like 1

Omim ID [605521](#)

Gene Ontology [Hyperlink](#)

**Gene Summary**

Initiation of transcription by RNA polymerase II requires the activities of more than 70 polypeptide s. The protein that coordinates these activities is transcription factor IID (TFIID), which binds to the core promoter to position the polymerase properly, serves as the scaffold for assembly of the remainder of the transcription complex, and acts as a channel for regulatory signals. TFIID is composed of the TATA-binding protein (TBP) and a group of evolutionarily conserved proteins known as TBP-associated factors or TAFs. TAFs may participate in basal transcription, serve as coactivators, function in promoter recognition or modify general transcription factors (GTFs) to facilitate complex assembly and transcription initiation. This gene encodes a protein that serves the same function as TBP and substitutes for TBP at some promoters that are not recognized by TFIID. It is essential for spermiogenesis and believed to be important in expression of developmentally regulated genes. [provided by RefSeq]

**Other Designations** 21-kDA TBP-like protein|OTTHUMP00000017240|TATA box binding protein-related factor 2|TBP-like protein|TBP-related factor 2|second TBP of unique DNA

## Pathway

- [Basal transcription factors](#)

## Disease

- [Azoospermia](#)
- [Infertility](#)
- [Iron Overload](#)
- [Liver Diseases](#)
- [Oligospermia](#)