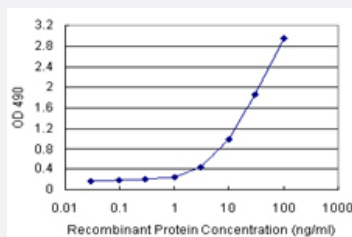


LITAF (Human) Matched Antibody Pair

Catalog # H00009516-AP21

Size 1 Set

Applications



Sandwich ELISA detection sensitivity ranging from 1 ng/ml to 100 ng/ml.

Specification

Product Description	This antibody pair set comes with a matched antibody pair to detect and quantify the protein level of human LITAF.
Reactivity	Human
Interspecies Antigen Sequence	Mouse (85); Rat (86)
Quality Control Testing	Standard curve using recombinant protein (H00009516-P01) as an analyte. Sandwich ELISA detection sensitivity ranging from 1 ng/ml to 100 ng/ml.
Supplied Product	Antibody pair set content: 1. Capture antibody: rabbit MaxPab® affinity purified polyclonal anti-LITAF (100 ug) 2. Detection antibody: mouse purified polyclonal anti-LITAF (20 ug) *Reagents are sufficient for at least 1-2 x 96 well plates using recommended protocols.
Storage Instruction	Store reagents of the antibody pair set at -20°C or lower. Please aliquot to avoid repeated freeze thaw cycle. Reagents should be returned to -20°C storage immediately after use.

Applications

- ELISA Pair (Recombinant protein)

[Protocol Download](#)

Gene Info — LITAF

Entrez GeneID	9516
Gene Name	LITAF
Gene Alias	FLJ38636, MGC116698, MGC116700, MGC116701, MGC125274, MGC125275, MGC125276, PIG7, SIMPLE, TP53I7
Gene Description	lipopolysaccharide-induced TNF factor
Omim ID	601098 603795
Gene Ontology	Hyperlink
Gene Summary	Lipopolysaccharide is a potent stimulator of monocytes and macrophages, causing secretion of tumor necrosis factor-alpha (TNF-alpha) and other inflammatory mediators. This gene encodes lipopolysaccharide-induced TNF-alpha factor, which is a DNA-binding protein and can mediate the TNF-alpha expression by direct binding to the promoter region of the TNF-alpha gene. The transcription of this gene is induced by tumor suppressor p53 and has been implicated in the p53-induced apoptotic pathway. Mutations in this gene cause Charcot-Marie-Tooth disease type 1C (CMT1C) and may be involved in the carcinogenesis of extramammary Paget's disease (EMPD). Multiple alternatively spliced transcript variants have been found for this gene. [provided by RefSeq]
Other Designations	LPS-induced TNF-alpha factor lipopolysaccharide-induced TNF-alpha factor lipopolysaccharide-induced tumor necrosis factor-alpha factor p53-induced gene 7 protein small integral membrane protein of lysosome/late endosome tumor protein p53 inducible protein

Disease

- [Arrhythmias](#)
- [Charcot-Marie-Tooth Disease](#)
- [Death](#)
- [Genetic Predisposition to Disease](#)
- [Lung Neoplasms](#)
- [Multiple Sclerosis](#)

- [Pulmonary Disease](#)
- [Urinary Bladder Neoplasms](#)
- [Werner syndrome](#)