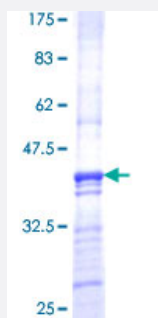


PMPCB (Human) Recombinant Protein (Q01)

Catalog # H00009512-Q01

Size 25 ug, 10 ug

Applications



Specification

Product Description	Human PMPCB partial ORF (NP_004270, 161 a.a. - 269 a.a.) recombinant protein with GST-tag at N-terminal.
Sequence	IQNSTLGEAEIERERGVILREMQEVETNLQEVVFDYHATAYQNTALGRTLGP TENIKSISRKDLVDY ITTHYKGPRVLAAAGGVSHDELLDLAKFHFGDSLCTHKG
Host	Wheat Germ (in vitro)
Theoretical MW (kDa)	37.73
Interspecies Antigen Sequence	Mouse (91); Rat (90)
Preparation Method	in vitro wheat germ expression system
Purification	Glutathione Sepharose 4 Fast Flow
Quality Control Testing	12.5% SDS-PAGE Stained with Coomassie Blue.
Storage Buffer	50 mM Tris-HCl, 10 mM reduced Glutathione, pH=8.0 in the elution buffer.
Storage Instruction	Store at -80°C. Aliquot to avoid repeated freezing and thawing.
Note	Best use within three months from the date of receipt of this protein.

Applications

- Enzyme-linked Immunoabsorbent Assay
- Western Blot (Recombinant protein)
- Antibody Production
- Protein Array

Gene Info — PMPCB

Entrez GeneID [9512](#)

GeneBank Accession# [NM_004279](#)

Protein Accession# [NP_004270](#)

Gene Name PMPCB

Gene Alias Beta-MPP, MPP11, MPPB, MPPP52

Gene Description peptidase (mitochondrial processing) beta

Omim ID [603131](#)

Gene Ontology [Hyperlink](#)

Gene Summary This gene is a member of the peptidase M16 family and encodes a protein with a zinc-binding motif. This protein is located in the mitochondrial matrix and catalyzes the cleavage of the leader peptides of precursor proteins newly imported into the mitochondria, though it only functions as part of a heterodimeric complex. [provided by RefSeq]

Other Designations mitochondrial processing peptidase beta subunit