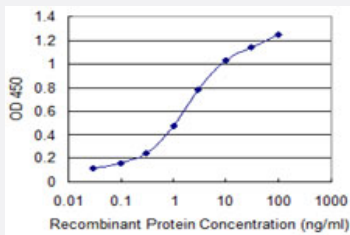


PMPCB monoclonal antibody (M01), clone 3C3

Catalog # H00009512-M01

Size 100 ug

Applications



Sandwich ELISA (Recombinant protein)

Detection limit for recombinant GST tagged PMPCB is 0.03 ng/ml as a capture antibody.

Specification

Product Description	Mouse monoclonal antibody raised against a partial recombinant PMPCB.
Immunogen	PMPCB (NP_004270, 161 a.a. ~ 269 a.a) partial recombinant protein with GST tag. MW of the GST tag alone is 26 KDa.
Sequence	IQNSTLGEAEIERERGVILREMQEVETNLQEVVFDYLAHATAYQNTALGRTLGPTENIKSIKSLVDYITTHYKGPRIVLAAAGGVSHDELLDLAKFHFGLSLCTHKG
Host	Mouse
Reactivity	Human
Interspecies Antigen Sequence	Mouse (91); Rat (90)
Isotype	IgG1 Kappa
Quality Control Testing	Antibody Reactive Against Recombinant Protein.
Storage Buffer	In 1x PBS, pH 7.4
Storage Instruction	Store at -20°C or lower. Aliquot to avoid repeated freezing and thawing.

Applications

- Sandwich ELISA (Recombinant protein)

Detection limit for recombinant GST tagged PMPCB is 0.03 ng/ml as a capture antibody.

[Protocol Download](#)

- ELISA

Gene Info — PMPCB

Entrez GeneID	9512
GeneBank Accession#	NM_004279
Protein Accession#	NP_004270
Gene Name	PMPCB
Gene Alias	Beta-MPP, MPP11, MPPB, MPPP52
Gene Description	peptidase (mitochondrial processing) beta
Omim ID	603131
Gene Ontology	Hyperlink
Gene Summary	This gene is a member of the peptidase M16 family and encodes a protein with a zinc-binding motif. This protein is located in the mitochondrial matrix and catalyzes the cleavage of the leader peptides of precursor proteins newly imported into the mitochondria, though it only functions as part of a heterodimeric complex. [provided by RefSeq]
Other Designations	mitochondrial processing peptidase beta subunit