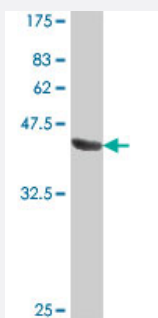


PMPCB polyclonal antibody (A01)

Catalog # H00009512-A01

Size 50 uL

Applications



Western Blot detection against Immunogen (38.1 kDa) .

Specification

Product Description	Mouse polyclonal antibody raised against a partial recombinant PMPCB.
Immunogen	PMPCB (NP_004270, 161 a.a. ~ 269 a.a) partial recombinant protein with GST tag.
Sequence	IQNSTLGEAEIERERGVILREMQEVETNLQEVVFDYLGATAYQNTALGRILGPTENIKSISRKDLVDYITTHYKGPRIMLAAAGGVSHDELLDLAKFHFGDSLCTHKG
Host	Mouse
Reactivity	Human
Interspecies Antigen Sequence	Mouse (91); Rat (90)
Quality Control Testing	Antibody Reactive Against Recombinant Protein. Western Blot detection against Immunogen (38.1 kDa) .
Storage Buffer	50 % glycerol
Storage Instruction	Store at -20°C or lower. Aliquot to avoid repeated freezing and thawing.

Applications

- Western Blot (Recombinant protein)

[Protocol Download](#)

- ELISA

Gene Info — PMPCB

Entrez GeneID [9512](#)

GeneBank Accession# [NM_004279](#)

Protein Accession# [NP_004270](#)

Gene Name PMPCB

Gene Alias Beta-MPP, MPP11, MPPB, MPPP52

Gene Description peptidase (mitochondrial processing) beta

Omim ID [603131](#)

Gene Ontology [Hyperlink](#)

Gene Summary This gene is a member of the peptidase M16 family and encodes a protein with a zinc-binding motif. This protein is located in the mitochondrial matrix and catalyzes the cleavage of the leader peptides of precursor proteins newly imported into the mitochondria, though it only functions as part of a heterodimeric complex. [provided by RefSeq]

Other Designations mitochondrial processing peptidase beta subunit