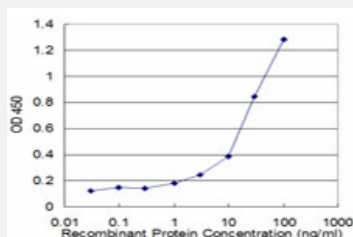


ADAMTS1 monoclonal antibody (M02), clone 1B8

Catalog # H00009510-M02

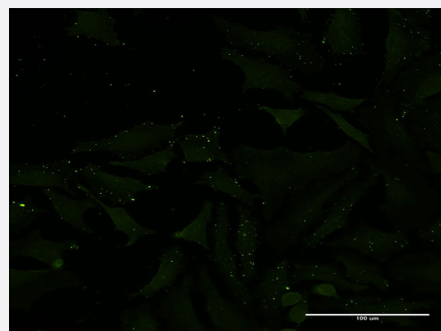
Size 100 ug

Applications



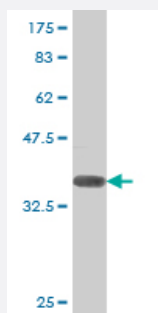
Sandwich ELISA (Recombinant protein)

Detection limit for recombinant GST tagged ADAMTS1 is approximately 1ng/ml as a capture antibody.



Immunofluorescence

Immunofluorescence of monoclonal antibody to ADAMTS1 on HeLa cell .
[antibody concentration 10 ug/ml]



Western Blot detection against Immunogen (37.84 KDa) .

Specification

Product Description

Mouse monoclonal antibody raised against a partial recombinant ADAMTS1.

Immunogen	ADAMTS1 (AAH36515, 858 a.a. ~ 967 a.a) partial recombinant protein with GST tag. MW of the GST tag alone is 26 KDa.
Sequence	WVIEEWGECSKSCSELGWQRRRLVECRDINGQPASECAKEVKPASTRPCADHPCPQWQLGEWS SCSKTCGKGYKKRSLKCLSHDGGVLSHESCDPLKKPKHFIDFCTMAECS
Host	Mouse
Reactivity	Human
Interspecies Antigen Sequence	Mouse (81); Rat (81)
Isotype	IgG2b Kappa
Quality Control Testing	Antibody Reactive Against Recombinant Protein. Western Blot detection against Immunogen (37.84 KDa) .
Storage Buffer	In 1x PBS, pH 7.4
Storage Instruction	Store at -20°C or lower. Aliquot to avoid repeated freezing and thawing.

Applications

- Western Blot (Recombinant protein)

[Protocol Download](#)

- Sandwich ELISA (Recombinant protein)

Detection limit for recombinant GST tagged ADAMTS1 is approximately 1ng/ml as a capture antibody.

[Protocol Download](#)

- ELISA

- Immunofluorescence

Immunofluorescence of monoclonal antibody to ADAMTS1 on HeLa cell . [antibody concentration 10 ug/ml]

Gene Info — ADAMTS1

Entrez GeneID [9510](#)

GeneBank Accession# [BC036515](#)

Protein Accession#	AAH36515
Gene Name	ADAMTS1
Gene Alias	C3-C5, KIAA1346, METH1
Gene Description	ADAM metallopeptidase with thrombospondin type 1 motif, 1
Omim ID	605174
Gene Ontology	Hyperlink
Gene Summary	<p>This gene encodes a member of the ADAMTS (a disintegrin and metalloproteinase with thrombospondin motif) protein family. Members of the family share several distinct protein modules, including a propeptide region, a metalloproteinase domain, a disintegrin-like domain, and a thrombospondin type 1 (TS) motif. Individual members of this family differ in the number of C-terminal TS motifs, and some have unique C-terminal domains. The protein encoded by this gene contains two disintegrin loops and three C-terminal TS motifs and has anti-angiogenic activity. The expression of this gene may be associated with various inflammatory processes as well as development of cancer cachexia. This gene is likely to be necessary for normal growth, fertility, and organ morphology and function. [provided by RefSeq]</p>
Other Designations	a disintegrin-like and metalloprotease (reprolysin type) with thrombospondin type 1 motif, 1 human metalloproteinase with thrombospondin type 1 motifs

Disease

- [Brain Ischemia](#)
- [Cardiovascular Diseases](#)
- [Coronary Disease](#)
- [Genetic Predisposition to Disease](#)
- [Kidney Failure](#)
- [Myocardial Infarction](#)
- [Stroke](#)