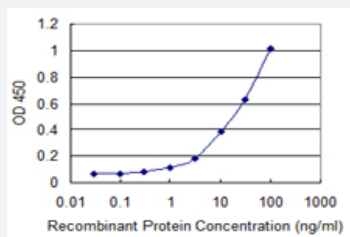


ADAMTS1 monoclonal antibody (M01), clone 2A9

Catalog # H00009510-M01

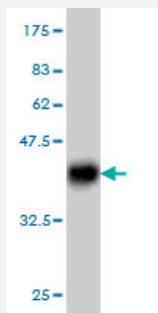
Size 50 ug

Applications



Sandwich ELISA (Recombinant protein)

Detection limit for recombinant GST tagged ADAMTS1 is 0.3 ng/ml as a capture antibody.



Western Blot detection against Immunogen (37.84 KDa) .

Specification

Product Description	Mouse monoclonal antibody raised against a partial recombinant ADAMTS1.
Immunogen	ADAMTS1 (AAH36515, 858 a.a. ~ 967 a.a) partial recombinant protein with GST tag. MW of the GST tag alone is 26 KDa.
Sequence	WVIEEWGECSKSCELGWQRRLVECRDINGQPASECAKEVKPASTRPCADHPCPQWQLGEWS SCSKTCGKGYKKRSLKCLSHDGGVLSHESCDPLKKPKHFIDFCTMAECS
Host	Mouse
Reactivity	Human

Interspecies Antigen Sequence	Mouse (81); Rat (81)
Isotype	IgG1 Kappa
Quality Control Testing	Antibody Reactive Against Recombinant Protein. Western Blot detection against Immunogen (37.84 KDa) .
Storage Buffer	In 1x PBS, pH 7.4
Storage Instruction	Store at -20°C or lower. Aliquot to avoid repeated freezing and thawing.

Applications

- Western Blot (Recombinant protein)

[Protocol Download](#)

- Sandwich ELISA (Recombinant protein)

Detection limit for recombinant GST tagged ADAMTS1 is 0.3 ng/ml as a capture antibody.

[Protocol Download](#)

- ELISA

Gene Info — ADAMTS1

Entrez GeneID	9510
GeneBank Accession#	BC036515
Protein Accession#	AAH36515
Gene Name	ADAMTS1
Gene Alias	C3-C5, KIAA1346, METH1
Gene Description	ADAM metallopeptidase with thrombospondin type 1 motif, 1
Omim ID	605174
Gene Ontology	Hyperlink

Gene Summary

This gene encodes a member of the ADAMTS (a disintegrin and metalloproteinase with thrombospondin motif) protein family. Members of the family share several distinct protein modules, including a propeptide region, a metalloproteinase domain, a disintegrin-like domain, and a thrombospondin type 1 (TS) motif. Individual members of this family differ in the number of C-terminal TS motifs, and some have unique C-terminal domains. The protein encoded by this gene contains two disintegrin loops and three C-terminal TS motifs and has anti-angiogenic activity. The expression of this gene may be associated with various inflammatory processes as well as development of cancer cachexia. This gene is likely to be necessary for normal growth, fertility, and organ morphology and function. [provided by RefSeq]

Other Designations

a disintegrin-like and metalloprotease (reprolysin type) with thrombospondin type 1 motif, 1|human metalloproteinase with thrombospondin type 1 motifs

Disease

- [Brain Ischemia](#)
- [Cardiovascular Diseases](#)
- [Coronary Disease](#)
- [Genetic Predisposition to Disease](#)
- [Kidney Failure](#)
- [Myocardial Infarction](#)
- [Stroke](#)