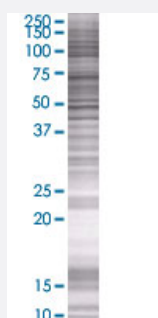


PAGE4 293T Cell Transient Overexpression Lysate(Denatured)

Catalog # H00009506-T01

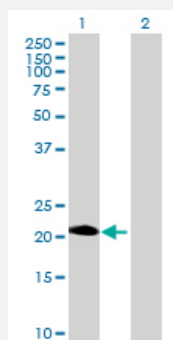
Size 100 uL

Applications



SDS-PAGE Gel

PAGE4 transfected lysate.



Western Blot

Lane 1: PAGE4 transfected lysate (11.33 KDa)

Lane 2: Non-transfected lysate.

Specification

Transfected Cell Line 293T

Plasmid pCMV-PAGE4 full-length

Host Human

Theoretical MW (kDa) 11.33

Quality Control Testing Transient overexpression cell lysate was tested with Anti-PAGE4 antibody ([H00009506-B01](#)) by Western Blots.
 SDS-PAGE Gel
 PAGE4 transfected lysate.
 Western Blot
 Lane 1: PAGE4 transfected lysate (11.33 KDa)
 Lane 2: Non-transfected lysate.

Storage Buffer

1X Sample Buffer (50 mM Tris-HCl, 2% SDS, 10% glycerol, 300 mM 2-mercaptoethanol, 0.01% Bromophenol blue)

Storage Instruction

Store at -80°C. Aliquot to avoid repeated freezing and thawing.

Applications

- Western Blot

Gene Info — PAGE4

Entrez GeneID[9506](#)**GeneBank Accession#**[NM_007003.2](#)**Protein Accession#**[NP_008934.1](#)**Gene Name**

PAGE4

Gene Alias

FLJ35184, GAGE-9, GAGEC1, JM-27, JM27, PAGE-1, PAGE-4

Gene Description

P antigen family, member 4 (prostate associated)

Omim ID[300287](#)**Gene Ontology**[Hyperlink](#)**Gene Summary**

This gene is a member of the GAGE family. The GAGE genes are expressed in a variety of tumors and in some fetal and reproductive tissues. This gene is strongly expressed in prostate and prostate cancer, but is also expressed in other male and female reproductive tissues including testis, fallopian tube, uterus, and placenta, as well as in testicular cancer and uterine cancer. The protein encoded by this gene shares sequence similarity with other GAGE/PAGE proteins, and also belongs to a family of CT (cancer-testis) antigens. [provided by RefSeq]

Other Designations

G antigen, family C, 1|OTTHUMP00000025849|OTTHUMP00000025850|prostate-associated gene protein 4