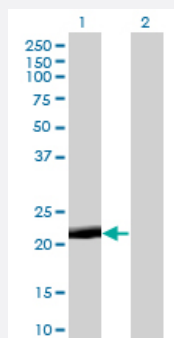


PAGE4 monoclonal antibody (M01), clone 7C3

Catalog # H00009506-M01

Size 100 ug

Applications

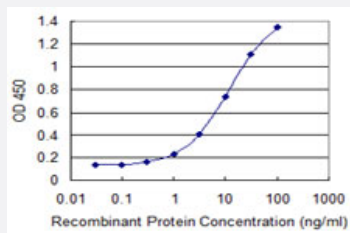


Western Blot (Transfected lysate)

Western Blot analysis of PAGE4 expression in transfected 293T cell line by PAGE4 monoclonal antibody (M01), clone 7C3.

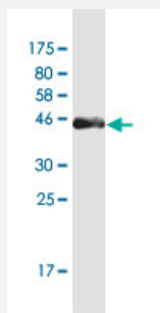
Lane 1: PAGE4 transfected lysate (11.2 KDa).

Lane 2: Non-transfected lysate.



Sandwich ELISA (Recombinant protein)

Detection limit for recombinant GST tagged PAGE4 is 0.1 ng/ml as a capture antibody.



Western Blot detection against Immunogen (37.6 KDa) .

Specification

Product Description

Mouse monoclonal antibody raised against a full-length recombinant PAGE4.

Immunogen	PAGE4 (NP_008934.1, 1 a.a. ~ 102 a.a) full-length recombinant protein with GST tag. MW of the GST tag alone is 26 KDa.
Sequence	MSARVRSRSRGRGDGQEAPDVVAFVAPGESQQEEPPTDNQDIEPGQEREGTPPIEERKVEGDC QEMDLEKTRSERGDGSDVKEKTPPNPKHAKTKEAGDGQP
Host	Mouse
Reactivity	Human
Isotype	IgG2b Kappa
Quality Control Testing	Antibody Reactive Against Recombinant Protein. Western Blot detection against Immunogen (37.6 KDa) .
Storage Buffer	In 1x PBS, pH 7.4
Storage Instruction	Store at -20°C or lower. Aliquot to avoid repeated freezing and thawing.

Applications

- Western Blot (Transfected lysate)

Western Blot analysis of PAGE4 expression in transfected 293T cell line by PAGE4 monoclonal antibody (M01), clone 7C3.

Lane 1: PAGE4 transfected lysate(11.2 KDa).

Lane 2: Non-transfected lysate.

[Protocol Download](#)

- Western Blot (Recombinant protein)

[Protocol Download](#)

- Sandwich ELISA (Recombinant protein)

Detection limit for recombinant GST tagged PAGE4 is 0.1 ng/ml as a capture antibody.

[Protocol Download](#)

- ELISA

Gene Info — PAGE4

Entrez GeneID [9506](#)

GeneBank Accession# [NM_007003.2](#)

Protein Accession#	NP_008934.1
Gene Name	PAGE4
Gene Alias	FLJ35184, GAGE-9, GAGEC1, JM-27, JM27, PAGE-1, PAGE-4
Gene Description	P antigen family, member 4 (prostate associated)
Omim ID	300287
Gene Ontology	Hyperlink
Gene Summary	<p>This gene is a member of the GAGE family. The GAGE genes are expressed in a variety of tumors and in some fetal and reproductive tissues. This gene is strongly expressed in prostate and prostate cancer, but is also expressed in other male and female reproductive tissues including testis, fallopian tube, uterus, and placenta, as well as in testicular cancer and uterine cancer. The protein encoded by this gene shares sequence similarity with other GAGE/PAGE proteins, and also belongs to a family of CT (cancer-testis) antigens. [provided by RefSeq]</p>
Other Designations	G antigen, family C, 1 OTTHUMP00000025849 OTTHUMP00000025850 prostate-associated gene protein 4