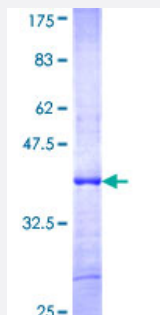


XAGE1 (Human) Recombinant Protein (Q01)

Catalog # H00009503-Q01

Size 25 ug, 10 ug

Applications



Specification

Product Description	Human XAGE1 partial ORF (NP_597674, 19 a.a. - 118 a.a.) recombinant protein with GST-tag at N-terminal.
Sequence	EGGPRSGGAQAKLGCCWGYSPRSTWNPDRRFWTPQTGPGEGRHERHTQTQNHTASPRSPV MESPKKKNQQLKVGILHLGSRQKKIRIQLRSQCATWKVI
Host	Wheat Germ (in vitro)
Theoretical MW (kDa)	36.74
Preparation Method	in vitro wheat germ expression system
Purification	Glutathione Sepharose 4 Fast Flow
Quality Control Testing	12.5% SDS-PAGE Stained with Coomassie Blue.
Storage Buffer	50 mM Tris-HCl, 10 mM reduced Glutathione, pH=8.0 in the elution buffer.
Storage Instruction	Store at -80°C. Aliquot to avoid repeated freezing and thawing.
Note	Best use within three months from the date of receipt of this protein.

Applications

- Enzyme-linked Immunoabsorbent Assay
- Western Blot (Recombinant protein)
- Antibody Production
- Protein Array

Gene Info — XAGE1D

Entrez GeneID [9503](#)

GeneBank Accession# [NM_133431](#)

Protein Accession# [NP_597674](#)

Gene Name XAGE1D

Gene Alias -

Gene Description X antigen family, member 1D

Omim ID [300289](#)

Gene Ontology [Hyperlink](#)

Gene Summary This gene is a member of the XAGE subfamily, which belongs to the GAGE family. The GAGE genes are expressed in a variety of tumors and in some fetal and reproductive tissues. This gene is strongly expressed in Ewing's sarcoma, alveolar rhabdomyosarcoma and normal testis. The protein encoded by this gene contains a nuclear localization signal and shares a sequence similarity with other GAGE/PAGE proteins. Because of the expression pattern and the sequence similarity, this protein also belongs to a family of CT (cancer-testis) antigens. Alternative splicing of this gene, in addition to the use of an alternative transcription start site and an alternative translation initiation codon, results in multiple variants that encode different isoforms. [provided by RefSeq]

Other Designations G antigen, family D, 2|OTTHUMP00000042367