

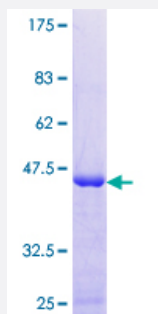
Full-Length

XAGE2 (Human) Recombinant Protein (P01)

Catalog # H00009502-P01

Size 25 ug, 10 ug

Applications



Specification

Product Description	Human XAGE2 full-length ORF (NP_570133.1, 1 a.a. - 111 a.a.) recombinant protein with GST-tag at N-terminal.
Sequence	MSWRGRSTYRPRRRSLQPPELGAMLEPTDEEPKEEKPPTKSRNPTDQKREDDQGAAEIQVP DLEADLQELCQTKTGDCGEGGTDVKGKILPKAEHFKMPEAGEGKSQV
Host	Wheat Germ (in vitro)
Theoretical MW (kDa)	38.8
Preparation Method	in vitro wheat germ expression system
Purification	Glutathione Sepharose 4 Fast Flow
Quality Control Testing	12.5% SDS-PAGE Stained with Coomassie Blue.
Storage Buffer	50 mM Tris-HCl, 10 mM reduced Glutathione, pH=8.0 in the elution buffer.
Storage Instruction	Store at -80°C. Aliquot to avoid repeated freezing and thawing.
Note	Best use within three months from the date of receipt of this protein.

Applications

- Enzyme-linked Immunoabsorbent Assay
- Western Blot (Recombinant protein)
- Antibody Production
- Protein Array

Gene Info — XAGE2

Entrez GeneID [9502](#)

GeneBank Accession# [NM_130777.1](#)

Protein Accession# [NP_570133.1](#)

Gene Name XAGE2

Gene Alias GAGED3, XAGE-2

Gene Description X antigen family, member 2

Omim ID [300416](#)

Gene Ontology [Hyperlink](#)

Gene Summary This gene is a member of the XAGE subfamily, which belongs to the GAGE family. The GAGE genes are expressed in a variety of tumors and in some fetal and reproductive tissues. This gene is strongly expressed in normal testis, and in Ewing's sarcoma, rhabdomyosarcoma, a breast cancer and a germ cell tumor. The protein encoded by this gene shares a sequence similarity with other GAGE/PAGE proteins. Because of the expression pattern and the sequence similarity, this protein also belongs to a family of CT (cancer-testis) antigens. [provided by RefSeq]

Other Designations G antigen, family D, 3|OTTHUMP00000023313|XAGE-2 protein