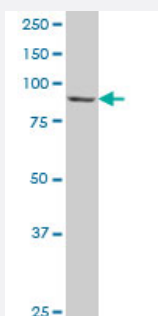


MAGED1 polyclonal antibody (A01)

Catalog # H00009500-A01

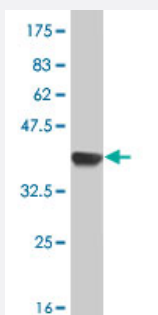
Size 50 uL

Applications



Western Blot (Cell lysate)

MAGED1 polyclonal antibody (A01), Lot # 060927JCS1 Western Blot analysis of MAGED1 expression in 293 (Cat # L026V1).



Western Blot detection against Immunogen (38.21 KDa) .

Specification

Product Description

Mouse polyclonal antibody raised against a partial recombinant MAGED1.

Immunogen

MAGED1 (NP_001005333, 117 a.a. ~ 226 a.a) partial recombinant protein with GST tag.

Sequence

EMADIQVSAAAARPKSAFKVQNATTKGPNGVYDFSQAHNKDVNTQPKAAFKSQNATPKGPN
AAYDFSQAATTGELAANKSEMAFKAQNATTKVGPNTYNFSQSLNAN

Host

Mouse

Reactivity

Human

Interspecies Antigen Sequence

Mouse (86); Rat (87)

Quality Control Testing

Antibody Reactive Against Recombinant Protein.
Western Blot detection against Immunogen (38.21 KDa) .

Storage Buffer

50 % glycerol

Storage Instruction

Store at -20°C or lower. Aliquot to avoid repeated freezing and thawing.

Applications

- Western Blot (Cell lysate)

MAGED1 polyclonal antibody (A01), Lot # 060927JCS1 Western Blot analysis of MAGED1 expression in 293 (Cat # L026V1).

[Protocol Download](#)

- Western Blot (Recombinant protein)

[Protocol Download](#)

- ELISA

Gene Info — MAGED1

Entrez GeneID

[9500](#)

GeneBank Accession#

[NM_001005333](#)

Protein Accession#

[NP_001005333](#)

Gene Name

MAGED1

Gene Alias

DLXIN-1, NRAGE

Gene Description

melanoma antigen family D, 1

Omim ID

[300224](#)

Gene Ontology

[Hyperlink](#)

Gene Summary

This gene is a member of the melanoma antigen gene (MAGE) family. Most of the genes of this family encode tumor specific antigens that are not expressed in normal adult tissues except testis. Although the protein encoded by this gene shares strong homology with members of the MAGE family, it is expressed in almost all normal adult tissues. This gene has been demonstrated to be involved in the p75 neurotrophin receptor mediated programmed cell death pathway. Three transcript variants encoding two different isoforms have been found for this gene. [provided by RefSeq]

Other Designations

OTTHUMP00000023302|OTTHUMP00000023303|OTTHUMP00000023304|OTTHUMP00000023305|neurotrophin receptor-interacting MAGE homolog

Pathway

- [Neurotrophin signaling pathway](#)

Disease

- [Genetic Predisposition to Disease](#)
- [Prostate cancer](#)
- [Prostatic Neoplasms](#)