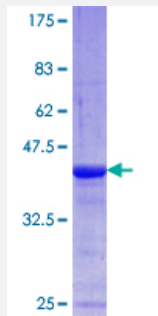


AKAP6 (Human) Recombinant Protein (Q01)

Catalog # H00009472-Q01

Size 25 ug, 10 ug

Applications



Specification

Product Description	Human AKAP6 partial ORF (NP_004265.3, 2221 a.a. - 2318 a.a.) recombinant protein with GST-tag at N-terminal.
Sequence	RAEVGKEVNGLPQTSSGCAENLEFTPSKLDSEKESGKPGESGMPEEHNAASAKSKVQDLSLK ANQPTDKAALHPSPKTLTCEENLLNLHEKRHRNMH
Host	Wheat Germ (in vitro)
Theoretical MW (kDa)	36.52
Interspecies Antigen Sequence	Mouse (54); Rat (51)
Preparation Method	in vitro wheat germ expression system
Purification	Glutathione Sepharose 4 Fast Flow
Quality Control Testing	12.5% SDS-PAGE Stained with Coomassie Blue.
Storage Buffer	50 mM Tris-HCl, 10 mM reduced Glutathione, pH=8.0 in the elution buffer.
Storage Instruction	Store at -80°C. Aliquot to avoid repeated freezing and thawing.
Note	Best use within three months from the date of receipt of this protein.

Applications

- Enzyme-linked Immunoabsorbent Assay
- Western Blot (Recombinant protein)
- Antibody Production
- Protein Array

Gene Info — AKAP6

Entrez GeneID [9472](#)

GeneBank Accession# [NM_004274](#)

Protein Accession# [NP_004265.3](#)

Gene Name AKAP6

Gene Alias ADAP100, ADAP6, AKAP100, KIAA0311, MGC165020, PRKA6, mAKAP

Gene Description A kinase (PRKA) anchor protein 6

Omim ID [604691](#)

Gene Ontology [Hyperlink](#)

Gene Summary The A-kinase anchor proteins (AKAPs) are a group of structurally diverse proteins, which have the common function of binding to the regulatory subunit of protein kinase A (PKA) and confining the holoenzyme to discrete locations within the cell. This gene encodes a member of the AKAP family. The encoded protein is highly expressed in various brain regions and cardiac and skeletal muscle . It is specifically localized to the sarcoplasmic reticulum and nuclear membrane, and is involved in anchoring PKA to the nuclear membrane or sarcoplasmic reticulum. [provided by RefSeq]

Other Designations A-kinase anchor protein 100|A-kinase anchor protein 6|protein kinase A anchoring protein 6

Disease

- [Genetic Predisposition to Disease](#)
- [Narcolepsy](#)