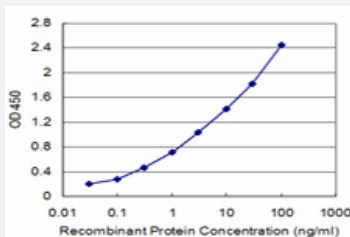


AKAP6 monoclonal antibody (M01), clone 1E7

Catalog # H00009472-M01

Size 100 ug

Applications



Sandwich ELISA (Recombinant protein)

Detection limit for recombinant GST tagged AKAP6 is approximately 0.03ng/ml as a capture antibody.

Specification

Product Description	Mouse monoclonal antibody raised against a partial recombinant AKAP6.
Immunogen	AKAP6 (NP_004265.3, 2221 a.a. ~ 2318 a.a) partial recombinant protein with GST tag. MW of the GST tag alone is 26 KDa.
Sequence	RAEVGKEVNGLPQTSSGCAENLEFTPSKLDSEKESSGKPGESGMPEEHNAASAKSKVQDLSLK ANQPTDKAALHPSPKLTCEENLLNLHEKRHRNMH
Host	Mouse
Reactivity	Human
Interspecies Antigen Sequence	Mouse (54); Rat (51)
Isotype	IgG2a Kappa
Quality Control Testing	Antibody Reactive Against Recombinant Protein.
Storage Buffer	In 1x PBS, pH 7.4
Storage Instruction	Store at -20°C or lower. Aliquot to avoid repeated freezing and thawing.

Applications

- Sandwich ELISA (Recombinant protein)

Detection limit for recombinant GST tagged AKAP6 is approximately 0.03ng/ml as a capture antibody.

[Protocol Download](#)

- ELISA

Gene Info — AKAP6

Entrez GeneID	9472
GeneBank Accession#	NM_004274
Protein Accession#	NP_004265.3
Gene Name	AKAP6
Gene Alias	ADAP100, ADAP6, AKAP100, KIAA0311, MGC165020, PRKA6, mAKAP
Gene Description	A kinase (PRKA) anchor protein 6
Omim ID	604691
Gene Ontology	Hyperlink
Gene Summary	The A-kinase anchor proteins (AKAPs) are a group of structurally diverse proteins, which have the common function of binding to the regulatory subunit of protein kinase A (PKA) and confining the holoenzyme to discrete locations within the cell. This gene encodes a member of the AKAP family. The encoded protein is highly expressed in various brain regions and cardiac and skeletal muscle . It is specifically localized to the sarcoplasmic reticulum and nuclear membrane, and is involved in anchoring PKA to the nuclear membrane or sarcoplasmic reticulum. [provided by RefSeq]
Other Designations	A-kinase anchor protein 100 A-kinase anchor protein 6 protein kinase A anchoring protein 6

Disease

- [Genetic Predisposition to Disease](#)
- [Narcolepsy](#)