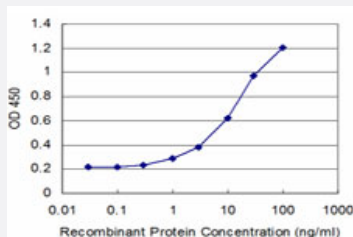


# AKAP7 monoclonal antibody (M13), clone 1F9

Catalog # H00009465-M13

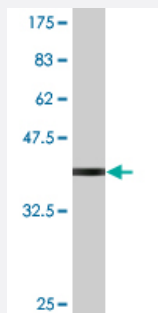
Size 100 ug

## Applications



### Sandwich ELISA (Recombinant protein)

Detection limit for recombinant GST tagged AKAP7 is approximately 1ng/ml as a capture antibody.



Western Blot detection against Immunogen (38.28 KDa) .

## Specification

Product Description	Mouse monoclonal antibody raised against a partial recombinant AKAP7.
Immunogen	AKAP7 (NP_057461.1, 2 a.a. ~ 115 a.a) partial recombinant protein with GST tag. MW of the GST tag alone is 26 KDa.
Sequence	SEEF EANTMDSLVDMPFATVDIQDDCGITDEPQINLKRSQENEWVKSDQVKKRKKRKYQPNYFLSIPITNKEIKGKILQNAIQQDERLAKAMVSDGSFHITLLVMQLLN
Host	Mouse
Reactivity	Human

Interspecies Antigen Sequence	Mouse (75)
Isotype	IgG2b Kappa
Quality Control Testing	Antibody Reactive Against Recombinant Protein. Western Blot detection against Immunogen (38.28 KDa) .
Storage Buffer	In 1x PBS, pH 7.4
Storage Instruction	Store at -20°C or lower. Aliquot to avoid repeated freezing and thawing.

## Applications

- Western Blot (Recombinant protein)

[Protocol Download](#)

- Sandwich ELISA (Recombinant protein)

Detection limit for recombinant GST tagged AKAP7 is approximately 1ng/ml as a capture antibody.

[Protocol Download](#)

- ELISA

## Gene Info — AKAP7

Entrez GeneID	<a href="#">9465</a>
GeneBank Accession#	<a href="#">NM_016377</a>
Protein Accession#	<a href="#">NP_057461.1</a>
Gene Name	AKAP7
Gene Alias	AKAP18
Gene Description	A kinase (PRKA) anchor protein 7
Omim ID	<a href="#">604693</a>
Gene Ontology	<a href="#">Hyperlink</a>

**Gene Summary**

This gene encodes a member of the A-kinase anchoring protein (AKAP) family, a group of functionally related proteins that bind to a regulatory subunit (RII) of cAMP-dependent protein kinase A (PKA) and target the enzyme to specific subcellular compartments. AKAPs have a common RII-binding domain, but contain different targeting motifs responsible for directing PKA to distinct intracellular locations. Three alternatively spliced transcript variants encoding different isoforms have been described. Additional variants exist, but their full-length natures have not been determined. [provided by RefSeq]

**Other Designations**

A-kinase anchor protein 7|A-kinase anchor protein 7 isoform alpha|A-kinase anchor protein 7, isoform alpha|A-kinase anchor protein 9 kDa|A-kinase anchor protein, 18-kD|A-kinase anchoring protein 18|OTTHUMP00000017200|OTTHUMP00000017201|OTTHUMP00000017202|

**Disease**

- [Tobacco Use Disorder](#)