

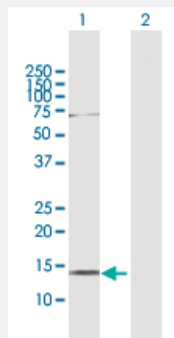
MaxPab®

AKAP7 purified MaxPab rabbit polyclonal antibody (D01P)

Catalog # H00009465-D01P

Size 100 ug

Applications



Western Blot (Transfected lysate)

Western Blot analysis of AKAP7 expression in transfected 293T cell line ([H00009465-T02](#)) by AKAP7 MaxPab polyclonal antibody.

Lane 1: AKAP7 transfected lysate(11.50 KDa).

Lane 2: Non-transfected lysate.

Specification

Product Description	Rabbit polyclonal antibody raised against a full-length human AKAP7 protein.
Immunogen	AKAP7 (NP_619539.1, 1 a.a. ~ 104 a.a) full-length human protein.
Sequence	MGQLCCFPFSRDEGKISELESSSSAVLQRYSKDIPSWSSGEKNGGEPDDAELVRLSKRLVENAV LKAVQQYLEETQNKKNKPGEGSSVKTEAADQNGNDNENNRK
Host	Rabbit
Reactivity	Human
Interspecies Antigen Sequence	Mouse (75)
Quality Control Testing	Antibody reactive against mammalian transfected lysate.
Storage Buffer	In 1x PBS, pH 7.4
Storage Instruction	Store at -20°C or lower. Aliquot to avoid repeated freezing and thawing.

Applications

- Western Blot (Transfected lysate)

Western Blot analysis of AKAP7 expression in transfected 293T cell line ([H00009465-T02](#)) by AKAP7 MaxPab polyclonal antibody.

Lane 1: AKAP7 transfected lysate(11.50 KDa).

Lane 2: Non-transfected lysate.

[Protocol Download](#)

Gene Info — AKAP7

Entrez GeneID [9465](#)

GeneBank Accession# [NM_138633](#)

Protein Accession# [NP_619539.1](#)

Gene Name AKAP7

Gene Alias AKAP18

Gene Description A kinase (PRKA) anchor protein 7

Omim ID [604693](#)

Gene Ontology [Hyperlink](#)

Gene Summary This gene encodes a member of the A-kinase anchoring protein (AKAP) family, a group of functionally related proteins that bind to a regulatory subunit (RII) of cAMP-dependent protein kinase A (PKA) and target the enzyme to specific subcellular compartments. AKAPs have a common RII-binding domain, but contain different targeting motifs responsible for directing PKA to distinct intracellular locations. Three alternatively spliced transcript variants encoding different isoforms have been described. Additional variants exist, but their full-length natures have not been determined. [provided by RefSeq]

Other Designations A-kinase anchor protein 7|A-kinase anchor protein 7 isoform alpha|A-kinase anchor protein 7, isoform alpha|A-kinase anchor protein 9 kDa|A-kinase anchor protein, 18-kD|A-kinase anchoring protein 18|OTTHUMP00000017200|OTTHUMP00000017201|OTTHUMP00000017202|

Disease

- [Tobacco Use Disorder](#)