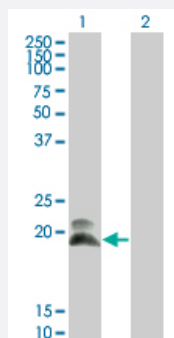


# HAND2 monoclonal antibody (M01), clone 4H8

Catalog # H00009464-M01

Size 100 ug

## Applications

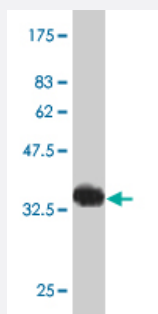


### Western Blot (Transfected lysate)

Western Blot analysis of HAND2 expression in transfected 293T cell line by HAND2 monoclonal antibody (M01), clone 4H8.

Lane 1: HAND2 transfected lysate(21.6 KDa).

Lane 2: Non-transfected lysate.



Western Blot detection against Immunogen (34.76 KDa) .

## Specification

<b>Product Description</b>	Mouse monoclonal antibody raised against a partial recombinant HAND2.
<b>Immunogen</b>	HAND2 (NP_068808.1, 135 a.a. ~ 216 a.a) partial recombinant protein with GST tag. MW of the GST tag alone is 26 KDa.
<b>Sequence</b>	LSKIKTLRLATSYIAYLMDLLAKDDQNGEAEAFKAEIKKTDVKEEKRRKKELNEILKSTVSSNDKGTK GRTGWPQHVWALELK
<b>Host</b>	Mouse
<b>Reactivity</b>	Human

Interspecies Antigen Sequence	Mouse (100); Rat (100)
Isotype	IgG2a Kappa
Quality Control Testing	Antibody Reactive Against Recombinant Protein. Western Blot detection against Immunogen (34.76 KDa) .
Storage Buffer	In 1x PBS, pH 7.4
Storage Instruction	Store at -20°C or lower. Aliquot to avoid repeated freezing and thawing.

## Applications

- Western Blot (Transfected lysate)

Western Blot analysis of HAND2 expression in transfected 293T cell line by HAND2 monoclonal antibody (M01), clone 4H8.

Lane 1: HAND2 transfected lysate(21.6 KDa).

Lane 2: Non-transfected lysate.

[Protocol Download](#)

- Western Blot (Recombinant protein)

[Protocol Download](#)

- ELISA

## Gene Info — HAND2

Entrez GeneID	<a href="#">9464</a>
GeneBank Accession#	<a href="#">NM_021973</a>
Protein Accession#	<a href="#">NP_068808.1</a>
Gene Name	HAND2
Gene Alias	DHAND2, FLJ16260, Hed, MGC125303, MGC125304, Thing2, bHLHa26, dHand
Gene Description	heart and neural crest derivatives expressed 2
Omim ID	<a href="#">602407</a>
Gene Ontology	<a href="#">Hyperlink</a>

**Gene Summary**

The protein encoded by this gene belongs to the basic helix-loop-helix family of transcription factors. This gene product is one of two closely related family members, the HAND proteins, which are asymmetrically expressed in the developing ventricular chambers and play an essential role in cardiac morphogenesis. Working in a complementary fashion, they function in the formation of the right ventricle and aortic arch arteries, implicating them as mediators of congenital heart disease. In addition, this transcription factor plays an important role in limb and branchial arch development. [provided by RefSeq]

**Other Designations**

basic helix-loop-helix transcription factor HAND2

**Disease**

- [Cleft Lip](#)
- [Cleft Palate](#)
- [Heart Defects](#)