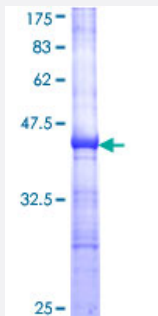


PRKCABP (Human) Recombinant Protein (Q01)

Catalog # H00009463-Q01

Size 25 ug, 10 ug

Applications



Specification

Product Description	Human PRKCABP partial ORF (NP_036539, 266 a.a. - 375 a.a.) recombinant protein with GST-tag at N-terminal.
Sequence	KVKEMDDEEYSCIALGEPLYRVSTGNYEYRLILRCRQEARARFSQMRKDVLEKMELLDQKHVQDI VFQLQRLVSTMSKYYNDCYAVLRDADVFPFIEVDLAHTTLAYGLNQ
Host	Wheat Germ (in vitro)
Theoretical MW (kDa)	37.84
Interspecies Antigen Sequence	Mouse (96); Rat (97)
Preparation Method	in vitro wheat germ expression system
Purification	Glutathione Sepharose 4 Fast Flow
Quality Control Testing	12.5% SDS-PAGE Stained with Coomassie Blue.
Storage Buffer	50 mM Tris-HCl, 10 mM reduced Glutathione, pH=8.0 in the elution buffer.
Storage Instruction	Store at -80°C. Aliquot to avoid repeated freezing and thawing.
Note	Best use within three months from the date of receipt of this protein.

Applications

- Enzyme-linked Immunoabsorbent Assay
- Western Blot (Recombinant protein)
- Antibody Production
- Protein Array

Gene Info — PICK1

Entrez GeneID [9463](#)

GeneBank Accession# [NM_012407](#)

Protein Accession# [NP_036539](#)

Gene Name PICK1

Gene Alias MGC15204, PICK, PRKCABP

Gene Description protein interacting with PRKCA 1

Omim ID [605926](#)

Gene Ontology [Hyperlink](#)

Gene Summary The protein encoded by this gene contains a PDZ domain, through which it interacts with protein kinase C, alpha (PRKCA). This protein may function as an adaptor that binds to and organizes the subcellular localization of a variety of membrane proteins. It has been shown to interact with multiple glutamate receptor subtypes, monoamine plasma membrane transporters, as well as non-voltage gated sodium channels, and may target PRKCA to these membrane proteins and thus regulate their distribution and function. This protein has also been found to act as an anchoring protein that specifically targets PRKCA to mitochondria in a ligand-specific manner. Three transcript variants encoding the same protein have been found for this gene. [provided by RefSeq]

Other Designations OTTHUMP00000028509|PRKCA-binding protein|protein interacting with C kinase 1|protein kinase C, alpha binding protein

Disease

- [Amphetamine-Related Disorders](#)

- [Genetic Predisposition to Disease](#)
- [Mental Disorders](#)
- [Psychoses](#)
- [Schizophrenia](#)