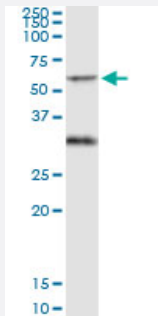


PICK1 (Human) IP-WB Antibody Pair

Catalog # H00009463-PW2

Size 1 Set

Applications



Immunoprecipitation of PICK1 transfected lysate using rabbit polyclonal anti-PICK1 and Protein A Magnetic Bead ([U0007](#)), and immunoblotted with mouse purified polyclonal anti-PICK1.

Specification

Product Description	This IP-WB antibody pair set comes with one antibody for immunoprecipitation and another to detect the precipitated protein in western blot.
Reactivity	Human
Interspecies Antigen Sequence	Mouse (96); Rat (97)
Quality Control Testing	Immunoprecipitation-Western Blot (IP-WB) Immunoprecipitation of PICK1 transfected lysate using rabbit polyclonal anti-PICK1 and Protein A Magnetic Bead (U0007), and immunoblotted with mouse purified polyclonal anti-PICK1.
Supplied Product	Antibody pair set content: 1. Antibody pair for IP: rabbit polyclonal anti-PICK1 (300 ul) 2. Antibody pair for WB: mouse purified polyclonal anti-PICK1 (50 ug)
Storage Instruction	Store reagents of the antibody pair set at -20°C or lower. Please aliquot to avoid repeated freeze thaw cycle. Reagents should be returned to -20°C storage immediately after use.

Applications

- Immunoprecipitation-Western Blot

[Protocol Download](#)

Gene Info — PICK1

Entrez GeneID [9463](#)

Gene Name PICK1

Gene Alias MGC15204, PICK, PRKCABP

Gene Description protein interacting with PRKCA 1

Omim ID [605926](#)

Gene Ontology [Hyperlink](#)

Gene Summary The protein encoded by this gene contains a PDZ domain, through which it interacts with protein kinase C, alpha (PRKCA). This protein may function as an adaptor that binds to and organizes the subcellular localization of a variety of membrane proteins. It has been shown to interact with multiple glutamate receptor subtypes, monoamine plasma membrane transporters, as well as non-voltage gated sodium channels, and may target PRKCA to these membrane proteins and thus regulate their distribution and function. This protein has also been found to act as an anchoring protein that specifically targets PRKCA to mitochondria in a ligand-specific manner. Three transcript variants encoding the same protein have been found for this gene. [provided by RefSeq]

Other Designations OTTHUMP00000028509|PRKCA-binding protein|protein interacting with C kinase 1|protein kinase C, alpha binding protein

Disease

- [Amphetamine-Related Disorders](#)
- [Genetic Predisposition to Disease](#)
- [Mental Disorders](#)
- [Psychoses](#)
- [Schizophrenia](#)