

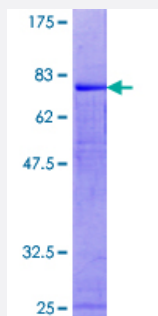
Full-Length

# PRKCABP (Human) Recombinant Protein (P01)

Catalog # H00009463-P01

Size 25 ug, 10 ug

## Applications



## Specification

### Product Description

Human PRKCABP full-length ORF ( NP\_036539.1, 1 a.a. - 415 a.a.) recombinant protein with GST-tag at N-terminal.

### Sequence

MFADLDYDIEEDKLGIPVPGKVTLQKDAQNLIGISIGGGAQYCPCLYVQVFDNTPAALDGTVAAG  
DEITGVNGRSIKGKTKVEVAKMIQEVKGEVTIHYNKLQADPKQGMSLDVLKKVKHRLVENMSSGT  
ADALGLSRAILCNDGLVKRLEELERTAELYKGMTEHTKNLLRAFYELSQTHRAFGDVFSVIGVREP  
QPAASEAFVKFADAHRSIEKFGIRLLKTIKPMLTDLNTYLNKAIPDTRLTIKKYLDVKFEYLSYCLKVK  
EMDDEEYSCIALGEPLYRVSTGNYEYRLILRCRQEARARFSQMRKDVLEKMELLDQKHVQDIVFQ  
LQRLVSTMSKYNDYAVLRDADVFPIDVLAHTTLAYGLNQEEFTDGEEDTAAAGPSRD  
TRGAAGPLDKGGSWCDS

### Host

Wheat Germ (in vitro)

### Theoretical MW (kDa)

73

### Interspecies Antigen Sequence

Mouse (96); Rat (97)

### Preparation Method

[in vitro wheat germ expression system](#)

### Purification

Glutathione Sepharose 4 Fast Flow

### Quality Control Testing

12.5% SDS-PAGE Stained with Coomassie Blue.

Storage Buffer	50 mM Tris-HCl, 10 mM reduced Glutathione, pH=8.0 in the elution buffer.
Storage Instruction	Store at -80°C. Aliquot to avoid repeated freezing and thawing.
Note	Best use within three months from the date of receipt of this protein.

## Applications

- Enzyme-linked Immunoabsorbent Assay
- Western Blot (Recombinant protein)
- Antibody Production
- Protein Array

## Gene Info — PICK1

Entrez GeneID	<a href="#">9463</a>
GeneBank Accession#	<a href="#">NM_012407.3</a>
Protein Accession#	<a href="#">NP_036539.1</a>
Gene Name	PICK1
Gene Alias	MGC15204, PICK, PRKCABP
Gene Description	protein interacting with PRKCA 1
Omim ID	<a href="#">605926</a>
Gene Ontology	<a href="#">Hyperlink</a>
Gene Summary	<p>The protein encoded by this gene contains a PDZ domain, through which it interacts with protein kinase C, alpha (PRKCA). This protein may function as an adaptor that binds to and organizes the subcellular localization of a variety of membrane proteins. It has been shown to interact with multiple glutamate receptor subtypes, monoamine plasma membrane transporters, as well as non-voltage gated sodium channels, and may target PRKCA to these membrane proteins and thus regulate their distribution and function. This protein has also been found to act as an anchoring protein that specifically targets PRKCA to mitochondria in a ligand-specific manner. Three transcript variants encoding the same protein have been found for this gene. [provided by RefSeq]</p>
Other Designations	OTTHUMP00000028509 PRKCA-binding protein protein interacting with C kinase 1 protein kinase C, alpha binding protein

## Disease

- [Amphetamine-Related Disorders](#)
- [Genetic Predisposition to Disease](#)
- [Mental Disorders](#)
- [Psychoses](#)
- [Schizophrenia](#)