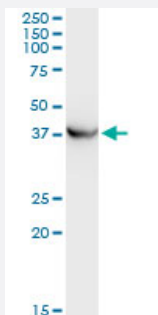


# PRKCABP monoclonal antibody (M01), clone 3G5

Catalog # H00009463-M01

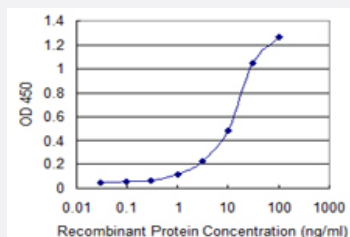
Size 100 ug

## Applications



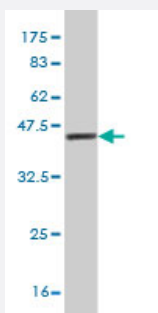
### Western Blot (Tissue lysate)

PRKCABP monoclonal antibody (M01), clone 3G5. Western Blot analysis of PICK1 expression in rat brain.



### Sandwich ELISA (Recombinant protein)

Detection limit for recombinant GST tagged PICK1 is 0.3 ng/ml as a capture antibody.



Western Blot detection against Immunogen (37.84 KDa) .

## Specification

### Product Description

Mouse monoclonal antibody raised against a partial recombinant PRKCABP.

<b>Immunogen</b>	PRKCABP (NP_036539, 266 a.a. ~ 375 a.a) partial recombinant protein with GST tag. MW of the GST tag alone is 26 KDa.
<b>Sequence</b>	KVKEMDDEEYSCIALGEPLYRVSTGNYEYRLILRCRQEARARFSQMRKDVLEKMELLDQKHVQDI VFQLQRLVSTMSKYYNDCYAVLRDADVFPFIEVDLAHTTLAYGLNQ
<b>Host</b>	Mouse
<b>Reactivity</b>	Human, Rat
<b>Interspecies Antigen Sequence</b>	Mouse (96); Rat (97)
<b>Isotype</b>	IgG2a Kappa
<b>Quality Control Testing</b>	Antibody Reactive Against Recombinant Protein. Western Blot detection against Immunogen (37.84 KDa) .
<b>Storage Buffer</b>	In 1x PBS, pH 7.4
<b>Storage Instruction</b>	Store at -20°C or lower. Aliquot to avoid repeated freezing and thawing.

## Applications

- Western Blot (Tissue lysate)

PRKCABP monoclonal antibody (M01), clone 3G5. Western Blot analysis of PICK1 expression in rat brain.

[Protocol Download](#)

- Western Blot (Recombinant protein)

[Protocol Download](#)

- Sandwich ELISA (Recombinant protein)

Detection limit for recombinant GST tagged PICK1 is 0.3 ng/ml as a capture antibody.

[Protocol Download](#)

- ELISA

## Gene Info — PICK1

Entrez GeneID [9463](#)

GeneBank Accession#	<a href="#">NM_012407</a>
Protein Accession#	<a href="#">NP_036539</a>
Gene Name	PICK1
Gene Alias	MGC15204, PICK, PRKCABP
Gene Description	protein interacting with PRKCA 1
Omim ID	<a href="#">605926</a>
Gene Ontology	<a href="#">Hyperlink</a>
Gene Summary	<p>The protein encoded by this gene contains a PDZ domain, through which it interacts with protein kinase C, alpha (PRKCA). This protein may function as an adaptor that binds to and organizes the subcellular localization of a variety of membrane proteins. It has been shown to interact with multiple glutamate receptor subtypes, monoamine plasma membrane transporters, as well as non-voltage gated sodium channels, and may target PRKCA to these membrane proteins and thus regulate their distribution and function. This protein has also been found to act as an anchoring protein that specifically targets PRKCA to mitochondria in a ligand-specific manner. Three transcript variants encoding the same protein have been found for this gene. [provided by RefSeq]</p>
Other Designations	OTTHUMP00000028509 PRKCA-binding protein protein interacting with C kinase 1 protein kinase C, alpha binding protein

## Disease

- [Amphetamine-Related Disorders](#)
- [Genetic Predisposition to Disease](#)
- [Mental Disorders](#)
- [Psychoses](#)
- [Schizophrenia](#)