

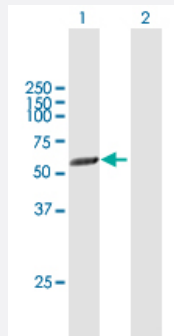
MaxPab®

# PICK1 purified MaxPab mouse polyclonal antibody (B01P)

Catalog # H00009463-B01P

Size 50 ug

## Applications



### Western Blot (Transfected lysate)

Western Blot analysis of PICK1 expression in transfected 293T cell line ([H00009463-T01](#)) by PICK1 MaxPab polyclonal antibody.

Lane 1: PRKCABP transfected lysate(45.65 KDa).

Lane 2: Non-transfected lysate.

## Specification

Product Description	Mouse polyclonal antibody raised against a full-length human PICK1 protein.
Immunogen	PICK1 (NP_036539.1, 1 a.a. ~ 415 a.a) full-length human protein.
Sequence	MFADLDYDIEEDKLGIPVPGKVTLQKDAQNLIGISIGGGAQYCPCLYVQVFDNTPAALDGTVAAG DEITGVNGRSIIKGKTKVEVAKMIQEVKGEVTIHYNKLQADPKQGMSLDVLKKVKHRLVENMSSGT ADALGLSRAILCNDGLVKRLEELERTAELYKGMTEHTKNLLRAFYELSQTTHRAFGDVFSVIGVREP QPAASEAFVKFADAHRSIEKFGIRLLKTIKPMPLDNLTYLNKAIPDTRLTIKKYLDVKFEYLSYCLKVK EMDDEEYSICALGEPLYRVSTGNYEYRLILRCRQEARARFSQMRKDVLEKMELLDQKHVQDIVFQ LQRLVSTMSKYNDYAVLRDADVFPIDVLAHTTLAGLNQEEFTDGEEDTAAAGEPSRD TRGAAGPLDKGGSWCDS
Host	Mouse
Reactivity	Human
Interspecies Antigen Sequence	Mouse (96); Rat (97)
Quality Control Testing	Antibody reactive against mammalian transfected lysate.
Storage Buffer	In 1x PBS, pH 7.4

## Storage Instruction

Store at -20°C or lower. Aliquot to avoid repeated freezing and thawing.

## Applications

- Western Blot (Transfected lysate)

Western Blot analysis of PICK1 expression in transfected 293T cell line ([H00009463-T01](#)) by PICK1 MaxPab polyclonal antibody.

Lane 1: PRKCABP transfected lysate(45.65 KDa).

Lane 2: Non-transfected lysate.

[Protocol Download](#)

## Gene Info — PICK1

Entrez GeneID [9463](#)

GeneBank Accession# [NM\\_012407.3](#)

Protein Accession# [NP\\_036539.1](#)

Gene Name PICK1

Gene Alias MGC15204, PICK, PRKCABP

Gene Description protein interacting with PRKCA 1

Omim ID [605926](#)

Gene Ontology [Hyperlink](#)

**Gene Summary** The protein encoded by this gene contains a PDZ domain, through which it interacts with protein kinase C, alpha (PRKCA). This protein may function as an adaptor that binds to and organizes the subcellular localization of a variety of membrane proteins. It has been shown to interact with multiple glutamate receptor subtypes, monoamine plasma membrane transporters, as well as non-voltage gated sodium channels, and may target PRKCA to these membrane proteins and thus regulate their distribution and function. This protein has also been found to act as an anchoring protein that specifically targets PRKCA to mitochondria in a ligand-specific manner. Three transcript variants encoding the same protein have been found for this gene. [provided by RefSeq]

**Other Designations** OTTHUMP00000028509|PRKCA-binding protein|protein interacting with C kinase 1|protein kinase C, alpha binding protein

## Disease

- [Amphetamine-Related Disorders](#)
- [Genetic Predisposition to Disease](#)
- [Mental Disorders](#)
- [Psychoses](#)
- [Schizophrenia](#)