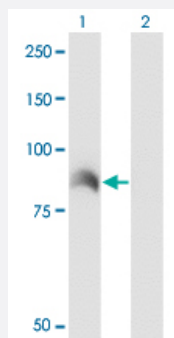


ARHGEF6 monoclonal antibody (M02), clone 2E5

Catalog # H00009459-M02

Size 100 ug

Applications

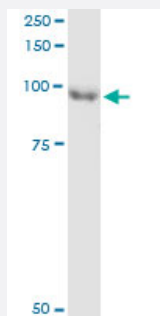


Western Blot (Transfected lysate)

Western Blot analysis of ARHGEF6 expression in transfected 293T cell line by ARHGEF6 monoclonal antibody (M02), clone 2E5.

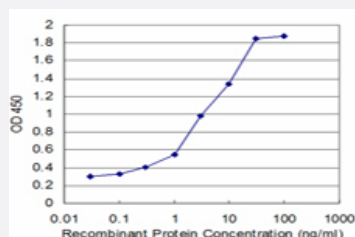
Lane 1: ARHGEF6 transfected lysate (Predicted MW: 87.5 KDa).

Lane 2: Non-transfected lysate.



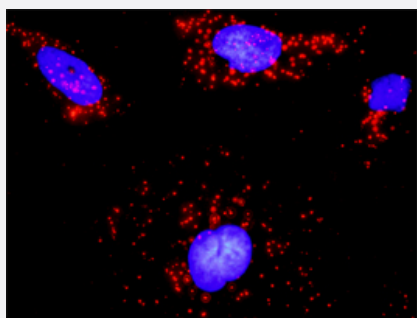
Immunoprecipitation

Immunoprecipitation of ARHGEF6 transfected lysate using anti-ARHGEF6 monoclonal antibody and Protein A Magnetic Bead, and immunoblotted with ARHGEF6 monoclonal antibody.



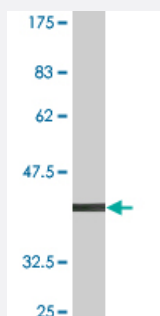
Sandwich ELISA (Recombinant protein)

Detection limit for recombinant GST tagged ARHGEF6 is approximately 0.03ng/ml as a capture antibody.



In situ Proximity Ligation Assay (Cell)

Proximity Ligation Analysis of protein-protein interactions between CDC42 and ARHGEF6. HeLa cells were stained with anti-CDC42 rabbit purified polyclonal 1:1200 and anti-ARHGEF6 mouse monoclonal antibody 1:50. Each red dot represents the detection of protein-protein interaction complex, and nuclei were counterstained with DAPI (blue).



Western Blot detection against Immunogen (38.06 KDa) .

Specification

Product Description	Mouse monoclonal antibody raised against a partial recombinant ARHGEF6.
Immunogen	ARHGEF6 (AAH39856.1, 61 a.a. ~ 175 a.a) partial recombinant protein with GST tag. MW of the GST tag alone is 26 KDa.
Sequence	QTEADCINNINDFLKGCATLQVEIFDPDDL YSGVNF SKVLSTLLAVNKATEDQLSERPCGRSSSLSAANTSQTNPQGAVSSTVSGLQRQSKTVEMTENGSHQLIVKARFNFKQTN
Host	Mouse
Reactivity	Human
Interspecies Antigen Sequence	Mouse (91); Rat (91)
Isotype	IgG2a Kappa
Quality Control Testing	Antibody Reactive Against Recombinant Protein. Western Blot detection against Immunogen (38.06 KDa) .
Storage Buffer	In 1x PBS, pH 7.4
Storage Instruction	Store at -20°C or lower. Aliquot to avoid repeated freezing and thawing.

Applications

- Western Blot (Transfected lysate)

Western Blot analysis of ARHGEF6 expression in transfected 293T cell line by ARHGEF6 monoclonal antibody (M02), clone 2E5.

Lane 1: ARHGEF6 transfected lysate (Predicted MW: 87.5 KDa).

Lane 2: Non-transfected lysate.

[Protocol Download](#)

- Western Blot (Recombinant protein)

[Protocol Download](#)

- Immunoprecipitation

Immunoprecipitation of ARHGEF6 transfected lysate using anti-ARHGEF6 monoclonal antibody and Protein A Magnetic Bead, and immunoblotted with ARHGEF6 monoclonal antibody.

[Protocol Download](#)

- Sandwich ELISA (Recombinant protein)

Detection limit for recombinant GST tagged ARHGEF6 is approximately 0.03ng/ml as a capture antibody.

[Protocol Download](#)

- ELISA

- In situ* Proximity Ligation Assay (Cell)

Proximity Ligation Analysis of protein-protein interactions between CDC42 and ARHGEF6. HeLa cells were stained with anti-CDC42 rabbit purified polyclonal 1:1200 and anti-ARHGEF6 mouse monoclonal antibody 1:50. Each red dot represents the detection of protein-protein interaction complex, and nuclei were counterstained with DAPI (blue).

Gene Info — ARHGEF6

Entrez GeneID [9459](#)

GeneBank Accession# [BC039856](#)

Protein Accession# [AAH39856.1](#)

Gene Name ARHGEF6

Gene Alias	COOL2, Cool-2, KIAA0006, MRX46, PIXA, alpha-PIX, alphaPIX
Gene Description	Rac/Cdc42 guanine nucleotide exchange factor (GEF) 6
Omim ID	300267 300436
Gene Ontology	Hyperlink
Gene Summary	Rho GTPases play a fundamental role in numerous cellular processes that are initiated by extracellular stimuli that work through G protein coupled receptors. The encoded protein belongs to a family of cytoplasmic proteins that activate the Ras-like family of Rho proteins by exchanging bound GDP for GTP. It may form a complex with G proteins and stimulate Rho-dependent signals. This protein is activated by PI3-kinase. Mutations in this gene can cause X-chromosomal non-specific mental retardation. [provided by RefSeq]
Other Designations	OTTHUMP00000062283 PAK-interacting exchange factor, alpha Rac/Cdc42 guanine exchange factor (GEF) 6 Rac/Cdc42 guanine nucleotide exchange factor 6 mental retardation, X-linked 46 rho guanine nucleotide exchange factor 6

Publication Reference

- [ARF1 recruits RAC1 to leading edge in neutrophil chemotaxis.](#)

Mazaki Y, Onodera Y, Higashi T, Horinouchi T, Oikawa T, Sabe H.

Cell Communication and Signaling 2017 Oct; 15(1):36.

Application: IF, WB-Tr, Human , HL-60 cells

Pathway

- [Pancreatic cancer](#)
- [Regulation of actin cytoskeleton](#)

Disease

- [Angina Pectoris](#)
- [Coronary Vasospasm](#)
- [Genetic Predisposition to Disease](#)