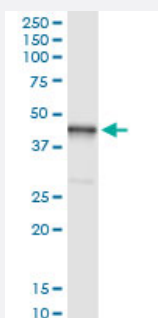


HOMER2 (Human) IP-WB Antibody Pair

Catalog # H00009455-PW1

Size 1 Set

Applications



Immunoprecipitation of HOMER2 transfected lysate using rabbit polyclonal anti-HOMER2 and Protein A Magnetic Bead ([U0007](#)), and immunoblotted with mouse purified polyclonal anti-HOMER2.

Specification

Product Description

This IP-WB antibody pair set comes with one antibody for immunoprecipitation and another to detect the precipitated protein in western blot.

Reactivity

Human

Interspecies Antigen Sequence

Mouse (91); Rat (92)

Quality Control Testing

Immunoprecipitation-Western Blot (IP-WB)
Immunoprecipitation of HOMER2 transfected lysate using rabbit polyclonal anti-HOMER2 and Protein A Magnetic Bead ([U0007](#)), and immunoblotted with mouse purified polyclonal anti-HOMER2.

Supplied Product

Antibody pair set content:
1. Antibody pair for IP: rabbit polyclonal anti-HOMER2 (300 ul)
2. Antibody pair for WB: mouse purified polyclonal anti-HOMER2 (50 ug)

Storage Instruction

Store reagents of the antibody pair set at -20°C or lower. Please aliquot to avoid repeated freeze thaw cycle. Reagents should be returned to -20°C storage immediately after use.

Applications

- Immunoprecipitation-Western Blot

[Protocol Download](#)

Gene Info — HOMER2

Entrez GeneID	9455
Gene Name	HOMER2
Gene Alias	ACPD, CPD, HOMER-2, HOMER2A, HOMER2B, Vesl-2
Gene Description	homer homolog 2 (Drosophila)
Omim ID	604799
Gene Ontology	Hyperlink
Gene Summary	This gene encodes a member of the homer family of dendritic proteins. Members of this family regulate group 1 metabotropic glutamate receptor function. The encoded protein may be involved in cell growth. Four transcript variants encoding distinct isoforms have been identified for this gene . [provided by RefSeq]
Other Designations	cupidin homer 2 homer homolog 3 homer, neuronal immediate early gene, 2

Disease

- [Alcoholism](#)
- [Cocaine-Related Disorders](#)
- [Genetic Predisposition to Disease](#)
- [Mental Disorders](#)
- [Schizophrenia](#)