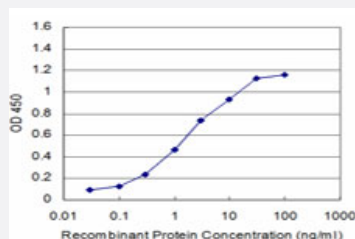


# MAP4K4 monoclonal antibody (M04), clone 4F8

Catalog # H00009448-M04

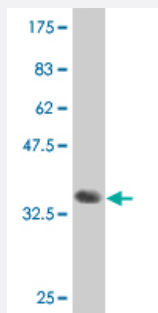
Size 100 ug

## Applications



### Sandwich ELISA (Recombinant protein)

Detection limit for recombinant GST tagged MAP4K4 is approximately 0.1ng/ml as a capture antibody.



Western Blot detection against Immunogen (36.63 KDa) .

## Specification

Product Description	Mouse monoclonal antibody raised against a partial recombinant MAP4K4.
Immunogen	MAP4K4 (NP_663719, 611 a.a. ~ 710 a.a) partial recombinant protein with GST tag. MW of the GST tag alone is 26 KDa.
Sequence	VHPALQRPAEPQVQWSHLASLKNNVSPVSRSHSFSDPSPKFAHHHLRSQDPCPPSRSEVLSQSSDSKSEAPDPTQKAWSRSDSDEVPPRPVVRTTSRSPV
Host	Mouse
Reactivity	Human

Interspecies Antigen Sequence	Mouse (95); Rat (89)
Isotype	IgG1 Kappa
Quality Control Testing	Antibody Reactive Against Recombinant Protein. Western Blot detection against Immunogen (36.63 KDa) .
Storage Buffer	In 1x PBS, pH 7.4
Storage Instruction	Store at -20°C or lower. Aliquot to avoid repeated freezing and thawing.

## Applications

- Western Blot (Recombinant protein)

[Protocol Download](#)

- Sandwich ELISA (Recombinant protein)

Detection limit for recombinant GST tagged MAP4K4 is approximately 0.1ng/ml as a capture antibody.

[Protocol Download](#)

- ELISA

## Gene Info — MAP4K4

Entrez GeneID	<a href="#">9448</a>
GeneBank Accession#	<a href="#">NM_145686</a>
Protein Accession#	<a href="#">NP_663719</a>
Gene Name	MAP4K4
Gene Alias	FLH21957, FLJ10410, FLJ20373, FLJ90111, HGK, KIAA0687, NIK
Gene Description	mitogen-activated protein kinase kinase kinase kinase 4
Omim ID	<a href="#">604666</a>
Gene Ontology	<a href="#">Hyperlink</a>

**Gene Summary**

The protein encoded by this gene is a member of the serine/threonine protein kinase family. This kinase has been shown to specifically activate MAPK8/JNK. The activation of MAPK8 by this kinase is found to be inhibited by the dominant-negative mutants of MAP3K7/TAK1, MAP2K4/MKK4, and MAP2K7/MKK7, which suggests that this kinase may function through the MAP3K7-MAP2K4-MAP2K7 kinase cascade, and mediate the TNF-alpha signaling pathway. Alternatively spliced transcript variants encoding different isoforms have been identified. [provided by RefSeq]

**Other Designations**

HPK/GCK-like kinase|hepatocyte progenitor kinase-like/germinal center kinase-like kinase

**Pathway**

- [MAPK signaling pathway](#)