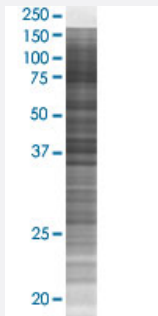


# CRSP8 293T Cell Transient Overexpression Lysate(Denatured)

Catalog # H00009442-T02

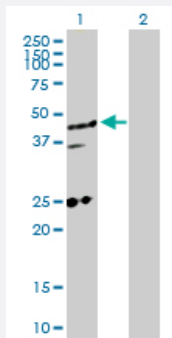
Size 100 uL

## Applications



### SDS-PAGE Gel

MED27 transfected lysate.



### Western Blot

Lane 1: MED27 transfected lysate ( 35.40 KDa)

Lane 2: Non-transfected lysate.

## Specification

Transfected Cell Line	293T
Plasmid	pCMV-CRSP8 full-length
Host	Human
Theoretical MW (kDa)	35.4
Interspecies Antigen Sequence	Mouse (98); Rat (98)

**Quality Control Testing**

Transient overexpression cell lysate was tested with Anti-CRSP8 antibody ([H00009442-D01P](#)) by Western Blots.  
SDS-PAGE Gel  
MED27 transfected lysate.  
Western Blot  
Lane 1: MED27 transfected lysate ( 35.40 KDa)  
Lane 2: Non-transfected lysate.

**Storage Buffer**

1X Sample Buffer (50 mM Tris-HCl, 2% SDS, 10% glycerol, 300 mM 2-mercaptoethanol, 0.01% Bromophenol blue)

**Storage Instruction**

Store at -80°C. Aliquot to avoid repeated freezing and thawing.

## Applications

- Western Blot

## Gene Info — MED27

**Entrez GeneID**[9442](#)**GeneBank Accession#**[NM\\_004269.2](#)**Protein Accession#**[NP\\_004260.2](#)**Gene Name**

MED27

**Gene Alias**

CRAP34, CRSP34, CRSP8, MGC11274, TRAP37

**Gene Description**

mediator complex subunit 27

**Omim ID**[605044](#)**Gene Ontology**[Hyperlink](#)**Gene Summary**

The activation of gene transcription is a multistep process that is triggered by factors that recognize transcriptional enhancer sites in DNA. These factors work with co-activators to direct transcriptional initiation by the RNA polymerase II apparatus. The protein encoded by this gene is a subunit of the CRSP (cofactor required for SP1 activation) complex, which, along with TFIID, is required for efficient activation by SP1. This protein is also a component of other multisubunit complexes e.g. thyroid hormone receptor-(TR-) associated proteins which interact with TR and facilitate TR function on DNA templates in conjunction with initiation factors and cofactors. [provided by RefSeq]

**Other Designations**

cofactor required for Sp1 transcriptional activation, subunit 8 (34kD)|cofactor required for Sp1 transcriptional activation, subunit 8, 34kDa|p37 TRAP/SMCC/PC2 subunit