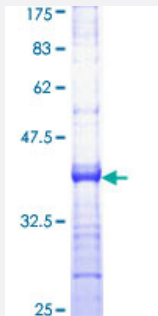


# CRSP6 (Human) Recombinant Protein (Q01)

Catalog # H00009440-Q01

Size 25 ug, 10 ug

## Applications



## Specification

|                                      |  |
|--------------------------------------|--|
| <b>Product Description</b>           | Human CRSP6 partial ORF ( AAH21101, 551 a.a. - 651 a.a.) recombinant protein with GST-tag at N-terminal. |
| <b>Sequence</b>                      | FSNHVGLGPIESIGNASAITVASPSGDYASVRNGPESGSKIMVQFPRNQCKDLPKSDVLQDNKW<br>SHLRGPFKEVQWNKMEGRNFVYKMELLMSALSPCLL |
| <b>Host</b>                          | Wheat Germ (in vitro)  |
| <b>Theoretical MW (kDa)</b>          | 36.85  |
| <b>Interspecies Antigen Sequence</b> | Mouse (95); Rat (96)   |
| <b>Preparation Method</b>            | <a href="#">in vitro wheat germ expression system</a>  |
| <b>Purification</b>                  | Glutathione Sepharose 4 Fast Flow  |
| <b>Quality Control Testing</b>       | 12.5% SDS-PAGE Stained with Coomassie Blue.  |
| <b>Storage Buffer</b>                | 50 mM Tris-HCl, 10 mM reduced Glutathione, pH=8.0 in the elution buffer.                                 |
| <b>Storage Instruction</b>           | Store at -80°C. Aliquot to avoid repeated freezing and thawing.  |
| <b>Note</b>                          | Best use within three months from the date of receipt of this protein.                                   |

## Applications

- Enzyme-linked Immunoabsorbent Assay
- Western Blot (Recombinant protein)
- Antibody Production
- Protein Array

## Gene Info — MED17

Entrez GeneID [9440](#)

GeneBank Accession# [BC021101](#)

Protein Accession# [AAH21101](#)

Gene Name MED17

Gene Alias CRSP6, CRSP77, DRIP80, FLJ10812, TRAP80

Gene Description mediator complex subunit 17

Omim ID [603810](#)

Gene Ontology [Hyperlink](#)

**Gene Summary** The activation of gene transcription is a multistep process that is triggered by factors that recognize transcriptional enhancer sites in DNA. These factors work with co-activators to direct transcriptional initiation by the RNA polymerase II apparatus. The protein encoded by this gene is a subunit of the CRSP (cofactor required for SP1 activation) complex, which, along with TFIID, is required for efficient activation by SP1. This protein is also a component of other multisubunit complexes e. g. thyroid hormone receptor-(TR-) associated proteins which interact with TR and facilitate TR function on DNA templates in conjunction with initiation factors and cofactors. [provided by RefSeq]

**Other Designations** cofactor required for Sp1 transcriptional activation, subunit 6 (77kD)|cofactor required for Sp1 transcriptional activation, subunit 6, 77kDa|thyroid hormone receptor-associated protein, 80-KD subunit|vitamin D receptor interacting protein 80-kD