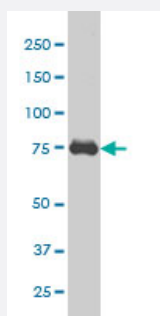


CRSP6 monoclonal antibody (M02), clone 1B5

Catalog # H00009440-M02

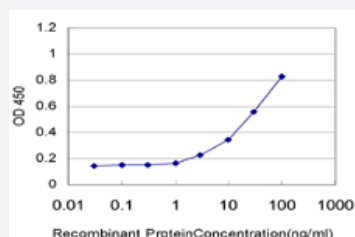
Size 100 ug

Applications



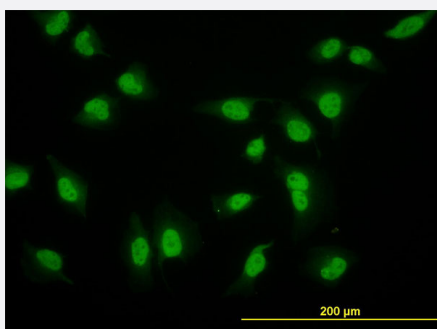
Western Blot (Cell lysate)

CRSP6 monoclonal antibody (M02), clone 1B5 Western Blot analysis of CRSP6 expression in HeLa S3 NE (Cat # L013V3).



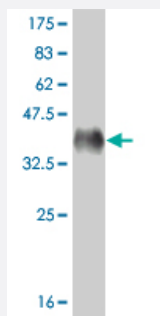
Sandwich ELISA (Recombinant protein)

Detection limit for recombinant GST tagged CRSP6 is approximately 3ng/ml as a capture antibody.



Immunofluorescence

Immunofluorescence of monoclonal antibody to CRSP6 on HeLa cell. [antibody concentration 10 ug/ml]



Western Blot detection against Immunogen (36.85 KDa) .

Specification

Product Description	Mouse monoclonal antibody raised against a partial recombinant CRSP6.
Immunogen	CRSP6 (AAH21101, 551 a.a. ~ 651 a.a) partial recombinant protein with GST tag. MW of the GST tag alone is 26 KDa.
Sequence	FSNHVGLGPIESIGNASAITVASPSGDYASVRNGPESGSKIMVQFPRNQCKDLPKSDVLQDNKW SHLRGPFKEVQWNKMEGRNFVYKMELLSALSPCLL
Host	Mouse
Reactivity	Human
Interspecies Antigen Sequence	Mouse (95); Rat (96)
Isotype	IgG1 Kappa
Quality Control Testing	Antibody Reactive Against Recombinant Protein. Western Blot detection against Immunogen (36.85 KDa) .
Storage Buffer	In 1x PBS, pH 7.4
Storage Instruction	Store at -20°C or lower. Aliquot to avoid repeated freezing and thawing.

Applications

- Western Blot (Cell lysate)

CRSP6 monoclonal antibody (M02), clone 1B5 Western Blot analysis of CRSP6 expression in Hela S3 NE (Cat # L013V3).

[Protocol Download](#)

- Western Blot (Recombinant protein)

[Protocol Download](#)

- Sandwich ELISA (Recombinant protein)

Detection limit for recombinant GST tagged CRSP6 is approximately 3ng/ml as a capture antibody.

[Protocol Download](#)

- ELISA

- Immunofluorescence

Immunofluorescence of monoclonal antibody to CRSP6 on HeLa cell. [antibody concentration 10 ug/ml]

Gene Info — MED17

Entrez GeneID [9440](#)

GeneBank Accession# [BC021101](#)

Protein Accession# [AAH21101](#)

Gene Name MED17

Gene Alias CRSP6, CRSP77, DRIP80, FLJ10812, TRAP80

Gene Description mediator complex subunit 17

Omim ID [603810](#)

Gene Ontology [Hyperlink](#)

Gene Summary The activation of gene transcription is a multistep process that is triggered by factors that recognize transcriptional enhancer sites in DNA. These factors work with co-activators to direct transcriptional initiation by the RNA polymerase II apparatus. The protein encoded by this gene is a subunit of the CRSP (cofactor required for SP1 activation) complex, which, along with TFIID, is required for efficient activation by SP1. This protein is also a component of other multisubunit complexes e. g. thyroid hormone receptor-(TR-) associated proteins which interact with TR and facilitate TR function on DNA templates in conjunction with initiation factors and cofactors. [provided by RefSeq]

Other Designations cofactor required for Sp1 transcriptional activation, subunit 6 (77kD)|cofactor required for Sp1 transcriptional activation, subunit 6, 77kDa|thyroid hormone receptor-associated protein, 80-KD subunit|vitamin D receptor interacting protein 80-kD

Publication Reference

- [Mediator complex recruits epigenetic regulators via its two cyclin-dependent kinase subunits to repress transcription of immune-response genes.](#)

Tsutsui T, Fukasawa R, Shinmyozu K, Nakagawa R, Tobe K, Tanaka A, Ohkuma Y.

The Journal of Biological Chemistry 2013 Jul; 288(29):20955.

Application: WB-Tr, Human, HeLa cells