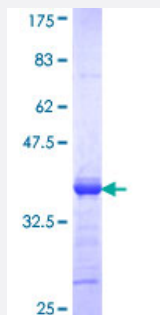


# CDY2 (Human) Recombinant Protein (Q01)

Catalog # H00009426-Q01

Size 25 ug, 10 ug

## Applications



## Specification

<b>Product Description</b>	Human CDY2 partial ORF ( NP_004816, 123 a.a. - 214 a.a.) recombinant protein with GST-tag at N-terminal.
<b>Sequence</b>	ASTLSDTKNMEIINSTIETLAPDSPFDHKKTVSGFQKLEKLDPIAADQQDTVVFKEGKLLRDPLS HPGAEQTGIQNKTMHPLMSQMSG
<b>Host</b>	Wheat Germ (in vitro)
<b>Theoretical MW (kDa)</b>	35.86
<b>Preparation Method</b>	<a href="#">in vitro wheat germ expression system</a>
<b>Purification</b>	Glutathione Sepharose 4 Fast Flow
<b>Quality Control Testing</b>	12.5% SDS-PAGE Stained with Coomassie Blue.
<b>Storage Buffer</b>	50 mM Tris-HCl, 10 mM reduced Glutathione, pH=8.0 in the elution buffer.
<b>Storage Instruction</b>	Store at -80°C. Aliquot to avoid repeated freezing and thawing.
<b>Note</b>	Best use within three months from the date of receipt of this protein.

## Applications

- Enzyme-linked Immunoabsorbent Assay
- Western Blot (Recombinant protein)
- Antibody Production
- Protein Array

## Gene Info — CDY2A

**Entrez GeneID** [9426](#)

**GeneBank Accession#** [NM\\_004825](#)

**Protein Accession#** [NP\\_004816](#)

**Gene Name** CDY2A

**Gene Alias** CDY, CDY2

**Gene Description** chromodomain protein, Y-linked, 2A

**Omim ID** [400018](#)

**Gene Ontology** [Hyperlink](#)

**Gene Summary** This intronless gene encodes a protein containing a chromodomain and a histone acetyltransferase catalytic domain. Chromodomain proteins are components of heterochromatin-like complexes and can act as gene repressors. This protein is localized to the nucleus of late spermatids where histone hyperacetylation takes place. Histone hyperacetylation is thought to facilitate the transition in which protamines replace histones as the major DNA-packaging protein. Two nearly identical copies of this gene are found in a palindromic region on chromosome Y; this record represents the telomeric copy. Chromosome Y also contains a pair of closely related genes in another more telomeric palindrome as well as several related pseudogenes. [provided by RefSeq]

**Other Designations** Y chromosome chromodomain protein 2A|chromodomain protein, Y chromosome, 2|testis-specific chromodomain protein Y protein 2