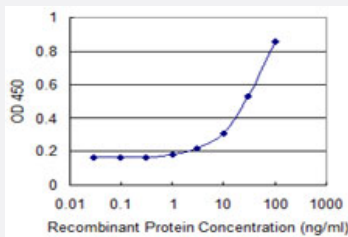


# CDY2A monoclonal antibody (M06), clone 2E2

Catalog # H00009426-M06

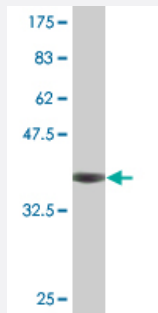
Size 100 ug

## Applications



### Sandwich ELISA (Recombinant protein)

Detection limit for recombinant GST tagged CDY2A is 1 ng/ml as a capture antibody.



Western Blot detection against Immunogen (35.86 KDa) .

## Specification

### Product Description

Mouse monoclonal antibody raised against a partial recombinant CDY2A.

### Immunogen

CDY2A (NP\_004816, 123 a.a. ~ 214 a.a) partial recombinant protein with GST tag. MW of the GST tag alone is 26 KDa.

### Sequence

ASTLSDTKNMEIINSTIETLAPDSPFDHKKTVSGFQKLEKLDPIAADQQD TVVFKVTEGKLLRDPLS  
HPGAEQTGIQNK TQMHPLMSQMSG S

### Host

Mouse

### Reactivity

Human

### Isotype

IgG2a Kappa

**Quality Control Testing**

Antibody Reactive Against Recombinant Protein.  
Western Blot detection against Immunogen (35.86 KDa) .

**Storage Buffer**

In 1x PBS, pH 7.4

**Storage Instruction**

Store at -20°C or lower. Aliquot to avoid repeated freezing and thawing.

## Applications

- Western Blot (Recombinant protein)

[Protocol Download](#)

- Sandwich ELISA (Recombinant protein)

Detection limit for recombinant GST tagged CDY2A is 1 ng/ml as a capture antibody.

[Protocol Download](#)

- ELISA

## Gene Info — CDY2A

**Entrez GeneID**

[9426](#)

**GeneBank Accession#**

[NM\\_004825](#)

**Protein Accession#**

[NP\\_004816](#)

**Gene Name**

CDY2A

**Gene Alias**

CDY, CDY2

**Gene Description**

chromodomain protein, Y-linked, 2A

**Omim ID**

[400018](#)

**Gene Ontology**

[Hyperlink](#)

**Gene Summary**

This intronless gene encodes a protein containing a chromodomain and a histone acetyltransferase catalytic domain. Chromodomain proteins are components of heterochromatin-like complexes and can act as gene repressors. This protein is localized to the nucleus of late spermatids where histone hyperacetylation takes place. Histone hyperacetylation is thought to facilitate the transition in which protamines replace histones as the major DNA-packaging protein. Two nearly identical copies of this gene are found in a palindromic region on chromosome Y; this record represents the telomeric copy. Chromosome Y also contains a pair of closely related genes in another more telomeric palindrome as well as several related pseudogenes. [provided by RefSeq]

**Other Designations**

Y chromosome chromodomain protein 2A|chromodomain protein, Y chromosome, 2|testis-specific chromodomain protein Y protein 2