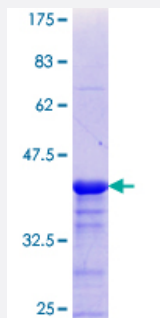


# CDYL (Human) Recombinant Protein (Q01)

Catalog # H00009425-Q01

Size 25 ug, 10 ug

## Applications



## Specification

<b>Product Description</b>	Human CDYL partial ORF ( NP_004815.2, 153 a.a. - 260 a.a.) recombinant protein with GST-tag at N-terminal.
<b>Sequence</b>	LVIGKDHESKNSQLFAASQKFRKNTAPSLSSRKNDLAKSGIKILVPKSPVKSRRTAVDGFQSESP EKLDPVEQQGEDTVAPEVAAEKPVGALLGPGAERARMGSRPRI
<b>Host</b>	Wheat Germ (in vitro)
<b>Theoretical MW (kDa)</b>	37.62
<b>Interspecies Antigen Sequence</b>	Mouse (97); Rat (97)
<b>Preparation Method</b>	<a href="#">in vitro wheat germ expression system</a>
<b>Purification</b>	Glutathione Sepharose 4 Fast Flow
<b>Quality Control Testing</b>	12.5% SDS-PAGE Stained with Coomassie Blue.
<b>Storage Buffer</b>	50 mM Tris-HCl, 10 mM reduced Glutathione, pH=8.0 in the elution buffer.
<b>Storage Instruction</b>	Store at -80°C. Aliquot to avoid repeated freezing and thawing.
<b>Note</b>	Best use within three months from the date of receipt of this protein.

## Applications

- Enzyme-linked Immunoabsorbent Assay
- Western Blot (Recombinant protein)
- Antibody Production
- Protein Array

## Gene Info — CDYL

Entrez GeneID [9425](#)

GeneBank Accession# [NM\\_004824](#)

Protein Accession# [NP\\_004815.2](#)

Gene Name CDYL

Gene Alias CDYL1, DKFZp586C1622, MGC131936

Gene Description chromodomain protein, Y-like

Omim ID [603778](#)

Gene Ontology [Hyperlink](#)

**Gene Summary** Chromodomain Y is a primate-specific Y-chromosomal gene family expressed exclusively in the testis and implicated in infertility. Although the Y-linked genes are testis-specific, this autosomal gene is ubiquitously expressed. The Y-linked genes arose by retrotransposition of an mRNA from this gene, followed by amplification of the retroposed gene. Proteins encoded by this gene superfamily possess a chromodomain, a motif implicated in chromatin binding and gene suppression, and a catalytic domain believed to be involved in histone acetylation. Multiple proteins are encoded by transcript variants of this gene. [provided by RefSeq]

**Other Designations** CDY-like, autosomal|OTTHUMP00000015984|bA620A17.2 (chromodomain protein, Y chromosome-like)|chromodomain protein, Y chromosome-like|chromodomain protein, Y chromosome-like, isoform b|testis-specific chromodomain Y-like protein

## Disease

- [Genetic Predisposition to Disease](#)

- [Thyroid Neoplasms](#)