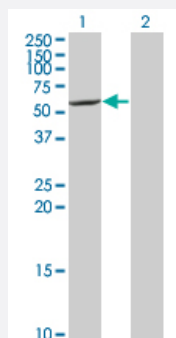


# CYP7B1 monoclonal antibody (M06), clone 2B11

Catalog # H00009420-M06

Size 100 ug

## Applications

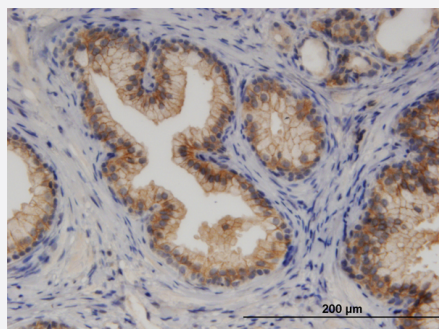


### Western Blot (Transfected lysate)

Western Blot analysis of CYP7B1 expression in transfected 293T cell line by CYP7B1 monoclonal antibody (M06), clone 2B11.

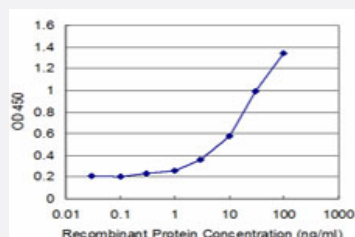
Lane 1: CYP7B1 transfected lysate (58.256 KDa).

Lane 2: Non-transfected lysate.



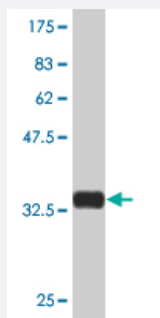
### Immunohistochemistry (Formalin/PFA-fixed paraffin-embedded sections)

Immunoperoxidase of monoclonal antibody to CYP7B1 on formalin-fixed paraffin-embedded human prostate. [antibody concentration 3 ug/ml]



### Sandwich ELISA (Recombinant protein)

Detection limit for recombinant GST tagged CYP7B1 is approximately 0.3ng/ml as a capture antibody.



Western Blot detection against Immunogen (34.98 KDa) .

## Specification

<b>Product Description</b>	Mouse monoclonal antibody raised against a partial recombinant CYP7B1.
<b>Immunogen</b>	CYP7B1 (NP_004811, 203 a.a. ~ 286 a.a) partial recombinant protein with GST tag. MW of the GST tag alone is 26 KDa.
<b>Sequence</b>	CDNNKFISELRDDFLKFDDKFAYLVSNPIELLGNVKSIREKIICKFSSEKLAKMQGWSEVFQSRQD VLEKYYVHEDLEIGAAHH
<b>Host</b>	Mouse
<b>Reactivity</b>	Human
<b>Interspecies Antigen Sequence</b>	Mouse (67); Rat (66)
<b>Isotype</b>	IgG2a Kappa
<b>Quality Control Testing</b>	Antibody Reactive Against Recombinant Protein. Western Blot detection against Immunogen (34.98 KDa) .
<b>Storage Buffer</b>	In 1x PBS, pH 7.4
<b>Storage Instruction</b>	Store at -20°C or lower. Aliquot to avoid repeated freezing and thawing.

## Applications

### ● Western Blot (Transfected lysate)

Western Blot analysis of CYP7B1 expression in transfected 293T cell line by CYP7B1 monoclonal antibody (M06), clone 2B11.

Lane 1: CYP7B1 transfected lysate(58.256 KDa).

Lane 2: Non-transfected lysate.

[Protocol Download](#)

- Western Blot (Recombinant protein)

[Protocol Download](#)

- Immunohistochemistry (Formalin/PFA-fixed paraffin-embedded sections)

Immunoperoxidase of monoclonal antibody to CYP7B1 on formalin-fixed paraffin-embedded human prostate. [antibody concentration 3 ug/ml]

[Protocol Download](#)

- Sandwich ELISA (Recombinant protein)

Detection limit for recombinant GST tagged CYP7B1 is approximately 0.3ng/ml as a capture antibody.

[Protocol Download](#)

- ELISA

## Gene Info — CYP7B1

Entrez GeneID [9420](#)

GeneBank Accession# [NM\\_004820](#)

Protein Accession# [NP\\_004811](#)

Gene Name CYP7B1

Gene Alias CBAS3, CP7B, SPG5A

Gene Description cytochrome P450, family 7, subfamily B, polypeptide 1

Omim ID [603711](#)

Gene Ontology [Hyperlink](#)

**Gene Summary** This gene encodes a member of the cytochrome P450 superfamily of enzymes. The cytochrome P450 proteins are monooxygenases which catalyze many reactions involved in drug metabolism and synthesis of cholesterol, steroids and other lipids. This endoplasmic reticulum membrane protein catalyzes the first reaction in the cholesterol catabolic pathway of extrahepatic tissues, which converts cholesterol to bile acids. This enzyme likely plays a minor role in total bile acid synthesis, but may also be involved in the development of atherosclerosis, neurosteroid metabolism and sex hormone synthesis. [provided by RefSeq]

**Other Designations** cytochrome P450, subfamily VIIIB (oxysterol 7 alpha-hydroxylase), polypeptide 1|oxysterol 7alpha-hydroxylase

## Pathway

- [Primary bile acid biosynthesis](#)

## Disease

- [Cardiovascular Diseases](#)
- [Diabetes Mellitus](#)
- [Edema](#)
- [Genetic Predisposition to Disease](#)
- [Lung Neoplasms](#)
- [Prostate cancer](#)
- [Prostatic Neoplasms](#)
- [Pulmonary Disease](#)
- [Urinary Bladder Neoplasms](#)
- [Werner syndrome](#)