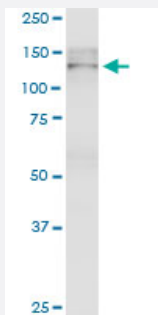


TJP2 monoclonal antibody (M01), clone 4D12

Catalog # H00009414-M01

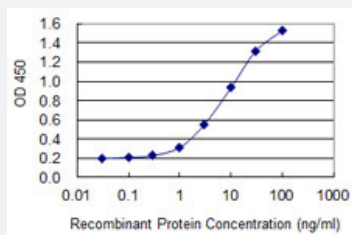
Size 100 ug

Applications



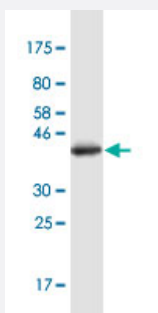
Western Blot (Cell lysate)

TJP2 monoclonal antibody (M01), clone 4D12. Western Blot analysis of TJP2 expression in HepG2.



Sandwich ELISA (Recombinant protein)

Detection limit for recombinant GST tagged TJP2 is 0.1 ng/ml as a capture antibody.



Western Blot detection against Immunogen (36.52 KDa) .

Specification

Product Description

Mouse monoclonal antibody raised against a partial recombinant TJP2.

Immunogen	TJP2 (NP_004808, 121 a.a. ~ 218 a.a) partial recombinant protein with GST tag. MW of the GST tag alone is 26 KDa.
Sequence	KVQVAALQASPPLDQDDRAFEVMDEFDGRSFRSGYSERSRLNSHGGRSRSWEDSPERGRPHERARSRERDLSRDRSRGRSLERGLDQDHARTRDRSRG
Host	Mouse
Reactivity	Human
Interspecies Antigen Sequence	Mouse (85); Rat (85)
Isotype	IgG2b Kappa
Quality Control Testing	Antibody Reactive Against Recombinant Protein. Western Blot detection against Immunogen (36.52 KDa) .
Storage Buffer	In 1x PBS, pH 7.4
Storage Instruction	Store at -20°C or lower. Aliquot to avoid repeated freezing and thawing.

Applications

- Western Blot (Cell lysate)

TJP2 monoclonal antibody (M01), clone 4D12. Western Blot analysis of TJP2 expression in HepG2.

[Protocol Download](#)

- Western Blot (Recombinant protein)

[Protocol Download](#)

- Sandwich ELISA (Recombinant protein)

Detection limit for recombinant GST tagged TJP2 is 0.1 ng/ml as a capture antibody.

[Protocol Download](#)

- ELISA

Gene Info — TJP2

Entrez GeneID [9414](#)

GeneBank Accession#	NM_004817
Protein Accession#	NP_004808
Gene Name	TJP2
Gene Alias	MGC26306, X104, ZO-2, ZO2
Gene Description	tight junction protein 2 (zona occludens 2)
Omim ID	607709 607748
Gene Ontology	Hyperlink
Gene Summary	Tight junction proteins (TJPs) belong to a family of membrane-associated guanylate kinase (MAG UK) homologs that are involved in the organization of epithelial and endothelial intercellular junctions. TJPs bind to the cytoplasmic C termini of junctional transmembrane proteins and link them to the actin cytoskeleton.[supplied by OMIM]
Other Designations	Friedreich ataxia region gene X104 (tight junction protein ZO-2) OTTHUMP00000021431 OTTHUMP00000063359

Pathway

- [Tight junction](#)
- [Vibrio cholerae infection](#)