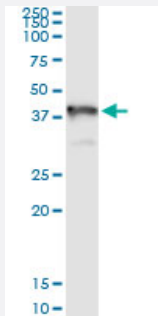


GRAP2 (Human) IP-WB Antibody Pair

Catalog # H00009402-PW2

Size 1 Set

Applications



Immunoprecipitation of GRAP2 transfected lysate using rabbit polyclonal anti-GRAP2 and Protein A Magnetic Bead ([U0007](#)), and immunoblotted with mouse purified polyclonal anti-GRAP2.

Specification

Product Description	This IP-WB antibody pair set comes with one antibody for immunoprecipitation and another to detect the precipitated protein in western blot.
Reactivity	Human
Quality Control Testing	Immunoprecipitation-Western Blot (IP-WB) Immunoprecipitation of GRAP2 transfected lysate using rabbit polyclonal anti-GRAP2 and Protein A Magnetic Bead (U0007), and immunoblotted with mouse purified polyclonal anti-GRAP2.
Supplied Product	Antibody pair set content: 1. Antibody pair for IP: rabbit polyclonal anti-GRAP2 (300 ul) 2. Antibody pair for WB: mouse purified polyclonal anti-GRAP2 (50 ug)
Storage Instruction	Store reagents of the antibody pair set at -20°C or lower. Please aliquot to avoid repeated freeze thaw cycle. Reagents should be returned to -20°C storage immediately after use.

Applications

- Immunoprecipitation-Western Blot

[Protocol Download](#)

Gene Info — GRAP2

Entrez GeneID [9402](#)

Gene Name GRAP2

Gene Alias GADS, GRAP-2, GRB2L, GRBLG, GRID, GRPL, GrbX, Grf40, Mona, P38

Gene Description GRB2-related adaptor protein 2

Omim ID [604518](#)

Gene Ontology [Hyperlink](#)

Gene Summary This gene encodes a member of the GRB2/Sem5/Drk family. This member is an adaptor-like protein involved in leukocyte-specific protein-tyrosine kinase signaling. Like its related family member , GRB2-related adaptor protein (GRAP), this protein contains an SH2 domain flanked by two SH3 domains. This protein interacts with other proteins, such as GRB2-associated binding protein 1 (GAB1) and the SLP-76 leukocyte protein (LCP2), through its SH3 domains. Transcript variants utilizing alternative polyA sites exist. [provided by RefSeq]

Other Designations GRB-2-like protein|GRB2-related protein with insert domain|OTTHUMP00000028837|SH3-SH2-SH3 adaptor molecule|growth factor receptor-binding protein|growth factor receptor-bound protein 2-related adaptor protein 2|hematopoietic cell-associated adaptor protein

Pathway

- [T cell receptor signaling pathway](#)

Disease

- [Carcinoma](#)
- [Disease Progression](#)
- [Genetic Predisposition to Disease](#)
- [Hepatitis C](#)
- [Liver Neoplasms](#)
- [Tobacco Use Disorder](#)
- [Viremia](#)