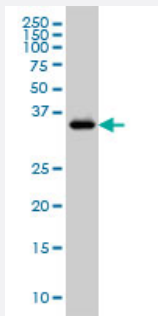


GRAP2 monoclonal antibody (M01), clone 1G12

Catalog # H00009402-M01

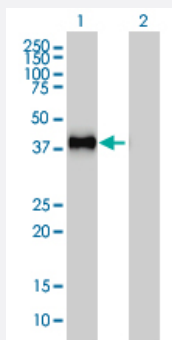
Size 100 ug

Applications



Western Blot (Cell lysate)

GRAP2 monoclonal antibody (M01), clone 1G12 Western Blot analysis of GRAP2 expression in Jurkat (Cat # L017V1).

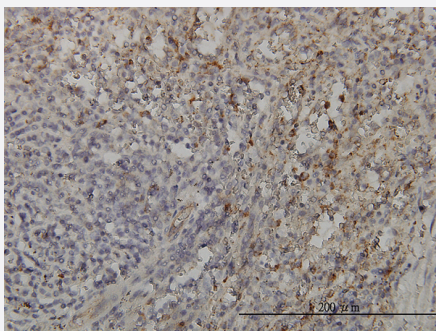


Western Blot (Transfected lysate)

Western Blot analysis of GRAP2 expression in transfected 293T cell line by GRAP2 monoclonal antibody (M01), clone 1G12.

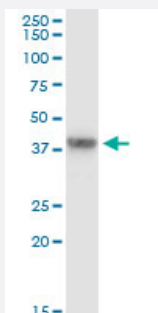
Lane 1: GRAP2 transfected lysate(38 KDa).

Lane 2: Non-transfected lysate.



Immunohistochemistry (Formalin/PFA-fixed paraffin-embedded sections)

Immunoperoxidase of monoclonal antibody to GRAP2 on formalin-fixed paraffin-embedded human spleen. [antibody concentration 3 ug/ml]

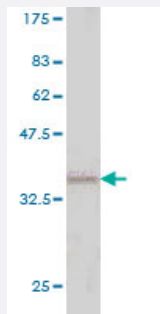
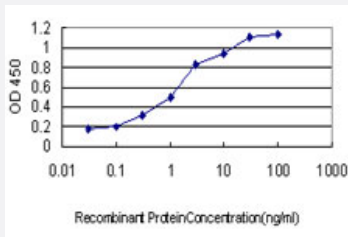


Immunoprecipitation

Immunoprecipitation of GRAP2 transfected lysate using anti-GRAP2 monoclonal antibody and Protein A Magnetic Bead, and immunoblotted with GRAP2 monoclonal antibody.

Sandwich ELISA (Recombinant protein)

Detection limit for recombinant GST tagged GRAP2 is approximately 0.03ng/ml as a capture antibody.



Western Blot detection against Immunogen (35.64 KDa) .

Specification

Product Description	Mouse monoclonal antibody raised against a partial recombinant GRAP2.
Immunogen	GRAP2 (AAH25692, 226 a.a. ~ 315 a.a) partial recombinant protein with GST tag. MW of the GST tag alone is 26 KDa.
Sequence	HHFHQERRGGSLDINDGHC GTGLGSEMNAALMHRRTDPVQLQAAGRVRWARALYDFEALEDD ELGFHSGEVVEVLDSSNPSWWTGRLHN
Host	Mouse
Reactivity	Human
Isotype	IgG2a Kappa
Quality Control Testing	Antibody Reactive Against Recombinant Protein. Western Blot detection against Immunogen (35.64 KDa) .
Storage Buffer	In 1x PBS, pH 7.4
Storage Instruction	Store at -20°C or lower. Aliquot to avoid repeated freezing and thawing.

Applications

- Western Blot (Cell lysate)

GRAP2 monoclonal antibody (M01), clone 1G12 Western Blot analysis of GRAP2 expression in Jurkat (Cat # L017V1).

[Protocol Download](#)

- Western Blot (Transfected lysate)

Western Blot analysis of GRAP2 expression in transfected 293T cell line by GRAP2 monoclonal antibody (M01), clone 1G12.

Lane 1: GRAP2 transfected lysate(38 KDa).

Lane 2: Non-transfected lysate.

[Protocol Download](#)

- Western Blot (Recombinant protein)

[Protocol Download](#)

- Immunohistochemistry (Formalin/PFA-fixed paraffin-embedded sections)

Immunoperoxidase of monoclonal antibody to GRAP2 on formalin-fixed paraffin-embedded human spleen. [antibody concentration 3 ug/ml]

[Protocol Download](#)

- Immunoprecipitation

Immunoprecipitation of GRAP2 transfected lysate using anti-GRAP2 monoclonal antibody and Protein A Magnetic Bead, and immunoblotted with GRAP2 monoclonal antibody.

[Protocol Download](#)

- Sandwich ELISA (Recombinant protein)

Detection limit for recombinant GST tagged GRAP2 is approximately 0.03ng/ml as a capture antibody.

[Protocol Download](#)

- ELISA

Gene Info — GRAP2

Entrez GeneID [9402](#)

GeneBank Accession# [BC025692](#)

Protein Accession# [AAH25692](#)

Gene Name	GRAP2
Gene Alias	GADS, GRAP-2, GRB2L, GRBLG, GRID, GRPL, GrbX, Grf40, Mona, P38
Gene Description	GRB2-related adaptor protein 2
Omim ID	604518
Gene Ontology	Hyperlink
Gene Summary	This gene encodes a member of the GRB2/Sem5/Drk family. This member is an adaptor-like protein involved in leukocyte-specific protein-tyrosine kinase signaling. Like its related family member , GRB2-related adaptor protein (GRAP), this protein contains an SH2 domain flanked by two SH3 domains. This protein interacts with other proteins, such as GRB2-associated binding protein 1 (GAB1) and the SLP-76 leukocyte protein (LCP2), through its SH3 domains. Transcript variants utilizing alternative polyA sites exist. [provided by RefSeq]
Other Designations	GRB-2-like protein GRB2-related protein with insert domain OTTHUMP00000028837 SH3-SH2-SH3 adaptor molecule growth factor receptor-binding protein growth factor receptor-bound protein 2-related adaptor protein 2 hematopoietic cell-associated adaptor protein

Pathway

- [T cell receptor signaling pathway](#)

Disease

- [Carcinoma](#)
- [Disease Progression](#)
- [Genetic Predisposition to Disease](#)
- [Hepatitis C](#)
- [Liver Neoplasms](#)
- [Tobacco Use Disorder](#)
- [Viremia](#)