

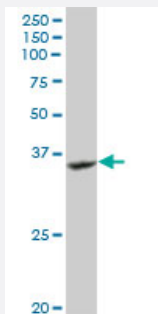
MaxPab®

GRAP2 purified MaxPab rabbit polyclonal antibody (D01P)

Catalog # H00009402-D01P

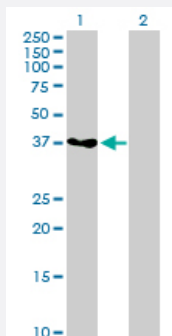
Size 100 ug

Applications



Western Blot (Cell lysate)

GRAP2 MaxPab rabbit polyclonal antibody. Western Blot analysis of GRAP2 expression in Jurkat.

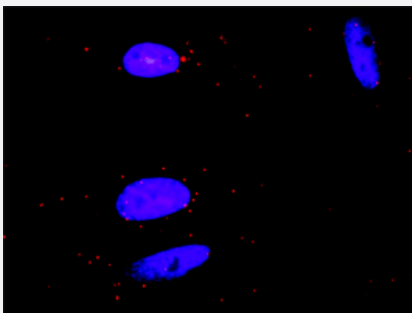


Western Blot (Transfected lysate)

Western Blot analysis of GRAP2 expression in transfected 293T cell line ([H00009402-T03](#)) by GRAP2 MaxPab polyclonal antibody.

Lane 1: GRAP2 transfected lysate(37.90 KDa).

Lane 2: Non-transfected lysate.



In situ Proximity Ligation Assay (Cell)

Proximity Ligation Analysis of protein-protein interactions between GRAP2 and CSF1R. HeLa cells were stained with anti-GRAP2 rabbit purified polyclonal 1:1200 and anti-CSF1R mouse monoclonal antibody 1:50. Each red dot represents the detection of protein-protein interaction complex, and nuclei were counterstained with DAPI (blue).

Specification

Product Description

Rabbit polyclonal antibody raised against a full-length human GRAP2 protein.

Immunogen	GRAP2 (NP_004801.1, 1 a.a. ~ 330 a.a) full-length human protein.
Sequence	MEAVAKFDFTASGEDELSFHTGDVLKILSNQEEWFKAEELGSQEGYVPKNFIDIQFPKWFHEGLSR HQAENLLMGKEVGFFIIRASQSSPGDFSISVRHEDDVQHFVKVMRDNKGNYFLWTEKFPSLNKLVD YYRTNSISRQKQIFLRDRTREDQGHGNSLDRRSQGGPHLSGAVGEEIRPSMNRKLSDHPPTLPL QQHQHQPPQYAPAPQQLQQPPQQRYLQH HHFHQERRGGSLDINDGHC GTGLGSEMNAALM HRRHTDPVQLQAAGRVRWARALYDFEALEDDELGFHSGEVVEVLDSSNPSWWTGRLHNKLGLF PANYVAPMTR
Host	Rabbit
Reactivity	Human
Quality Control Testing	Antibody reactive against mammalian transfected lysate.
Storage Buffer	In 1x PBS, pH 7.4
Storage Instruction	Store at -20°C or lower. Aliquot to avoid repeated freezing and thawing.

Applications

- Western Blot (Cell lysate)

GRAP2 MaxPab rabbit polyclonal antibody. Western Blot analysis of GRAP2 expression in Jurkat.

[Protocol Download](#)

- Western Blot (Transfected lysate)

Western Blot analysis of GRAP2 expression in transfected 293T cell line ([H00009402-T03](#)) by GRAP2 MaxPab polyclonal antibody.

Lane 1: GRAP2 transfected lysate(37.90 KDa).

Lane 2: Non-transfected lysate.

[Protocol Download](#)

- In situ* Proximity Ligation Assay (Cell)

Proximity Ligation Analysis of protein-protein interactions between GRAP2 and CSF1R. HeLa cells were stained with anti-GRAP2 rabbit purified polyclonal 1:1200 and anti-CSF1R mouse monoclonal antibody 1:50. Each red dot represents the detection of protein-protein interaction complex, and nuclei were counterstained with DAPI (blue).

Gene Info — GRAP2

Entrez GeneID [9402](#)

GeneBank Accession# [NM_004810](#)

Protein Accession#	NP_004801.1
Gene Name	GRAP2
Gene Alias	GADS, GRAP-2, GRB2L, GRBLG, GRID, GRPL, GrbX, Grf40, Mona, P38
Gene Description	GRB2-related adaptor protein 2
Omim ID	604518
Gene Ontology	Hyperlink
Gene Summary	This gene encodes a member of the GRB2/Sem5/Drk family. This member is an adaptor-like protein involved in leukocyte-specific protein-tyrosine kinase signaling. Like its related family member , GRB2-related adaptor protein (GRAP), this protein contains an SH2 domain flanked by two SH3 domains. This protein interacts with other proteins, such as GRB2-associated binding protein 1 (GAB1) and the SLP-76 leukocyte protein (LCP2), through its SH3 domains. Transcript variants utilizing alternative polyA sites exist. [provided by RefSeq
Other Designations	GRB-2-like protein GRB2-related protein with insert domain OTTHUMP00000028837 SH3-SH2-SH3 adaptor molecule growth factor receptor-binding protein growth factor receptor-bound protein 2-related adaptor protein 2 hematopoietic cell-associated adaptor protein

Pathway

- [T cell receptor signaling pathway](#)

Disease

- [Carcinoma](#)
- [Disease Progression](#)
- [Genetic Predisposition to Disease](#)
- [Hepatitis C](#)
- [Liver Neoplasms](#)
- [Tobacco Use Disorder](#)
- [Viremia](#)