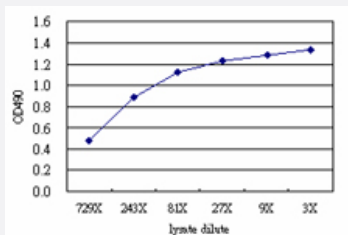


GRAP2 (Human) Matched Antibody Pair

Catalog # H00009402-AP51

Size 1 Set

Applications



Sandwich ELISA detection sensitivity ranging from approximately 729x to 3x dilution of the GRAP2 293T overexpression lysate (non-denatured).

Specification

Product Description

This antibody pair set comes with a matched antibody pair to detect and quantify the protein level of human GRAP2.

Reactivity

Human

Quality Control Testing

Standard curve using GRAP2 293T overexpression lysate (non-denatured) as an analyte. Sandwich ELISA detection sensitivity ranging from approximately 729x to 3x dilution of the GRAP2 293T overexpression lysate (non-denatured).

Supplied Product

Antibody pair set content:
 1. Capture antibody: mouse monoclonal anti-GRAP2 (100 ug)
 2. Detection antibody: rabbit purified polyclonal anti-GRAP2 (50 ug)
 *Reagents are sufficient for at least 3-5 x 96 well plates using recommended protocols.

Storage Instruction

Store reagents of the antibody pair set at -20°C or lower. Please aliquot to avoid repeated freeze thaw cycle. Reagents should be returned to -20°C storage immediately after use.

Applications

- ELISA Pair (Transfected lysate)

[Protocol Download](#)

Gene Info — GRAP2

Entrez GeneID [9402](#)

Gene Name GRAP2

Gene Alias GADS, GRAP-2, GRB2L, GRBLG, GRID, GRPL, GrbX, Grf40, Mona, P38

Gene Description GRB2-related adaptor protein 2

Omim ID [604518](#)

Gene Ontology [Hyperlink](#)

Gene Summary This gene encodes a member of the GRB2/Sem5/Drk family. This member is an adaptor-like protein involved in leukocyte-specific protein-tyrosine kinase signaling. Like its related family member , GRB2-related adaptor protein (GRAP), this protein contains an SH2 domain flanked by two SH3 domains. This protein interacts with other proteins, such as GRB2-associated binding protein 1 (GAB1) and the SLP-76 leukocyte protein (LCP2), through its SH3 domains. Transcript variants utilizing alternative polyA sites exist. [provided by RefSeq]

Other Designations GRB-2-like protein|GRB2-related protein with insert domain|OTTHUMP00000028837|SH3-SH2-SH3 adaptor molecule|growth factor receptor-binding protein|growth factor receptor-bound protein 2-related adaptor protein 2|hematopoietic cell-associated adaptor protein

Pathway

- [T cell receptor signaling pathway](#)

Disease

- [Carcinoma](#)
- [Disease Progression](#)
- [Genetic Predisposition to Disease](#)
- [Hepatitis C](#)
- [Liver Neoplasms](#)
- [Tobacco Use Disorder](#)
- [Viremia](#)