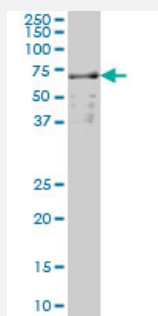


SLC22A13 monoclonal antibody (M01), clone 1E6

Catalog # H00009390-M01

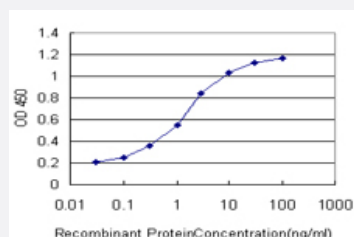
Size 100 ug

Applications



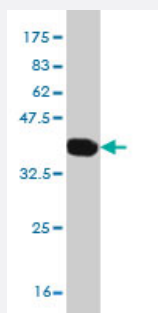
Western Blot (Cell lysate)

SLC22A13 monoclonal antibody (M01), clone 1E6 Western Blot analysis of SLC22A13 expression in A-431 (Cat # L015V1).



Sandwich ELISA (Recombinant protein)

Detection limit for recombinant GST tagged SLC22A13 is approximately 0.03ng/ml as a capture antibody.



Western Blot detection against Immunogen (36.96 KDa) .

Specification

Product Description

Mouse monoclonal antibody raised against a partial recombinant SLC22A13.

Immunogen	SLC22A13 (NP_004247, 38 a.a. ~ 139 a.a) partial recombinant protein with GST tag. MW of the GST tag alone is 26 KDa.
Sequence	AHVFMLDEPHHCVAWVKNHTFNL SAAEQLVLSVPLDTAGHPEPCLMFRPPPANASLQDILSH RFNETQPCDMGWEYPENRLPSLKNEFNLVCDRKHLKDT
Host	Mouse
Reactivity	Human
Isotype	IgG2a Kappa
Quality Control Testing	Antibody Reactive Against Recombinant Protein. Western Blot detection against Immunogen (36.96 KDa) .
Storage Buffer	In 1x PBS, pH 7.4
Storage Instruction	Store at -20°C or lower. Aliquot to avoid repeated freezing and thawing.

Applications

- Western Blot (Cell lysate)

SLC22A13 monoclonal antibody (M01), clone 1E6 Western Blot analysis of SLC22A13 expression in A-431 (Cat # L015V1).

[Protocol Download](#)

- Western Blot (Recombinant protein)

[Protocol Download](#)

- Sandwich ELISA (Recombinant protein)

Detection limit for recombinant GST tagged SLC22A13 is approximately 0.03ng/ml as a capture antibody.

[Protocol Download](#)

- ELISA

Gene Info — SLC22A13

Entrez GeneID	9390
GeneBank Accession#	NM_004256
Protein Accession#	NP_004247

Gene Name	SLC22A13
Gene Alias	OAT10, OCTL1, OCTL3, ORCTL-3, ORCTL3
Gene Description	solute carrier family 22 (organic anion transporter), member 13
Omim ID	604047
Gene Ontology	Hyperlink
Gene Summary	This gene encodes a member of the organic-cation transporter family. It is located in a gene cluster with another member of the family, organic cation transporter like 4. The encoded protein is a transmembrane protein involved in the transport of small molecules. This protein can function to mediate urate uptake and is a high affinity nicotinate exchanger in the kidneys and the intestine. [provided by RefSeq]
Other Designations	organic cationic transporter-like 3 organic-cation transporter like 3 solute carrier family 22, member 13

Disease

- [Tobacco Use Disorder](#)