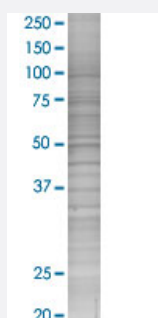


SLC22A8 293T Cell Transient Overexpression Lysate(Denatured)

Catalog # H00009376-T02

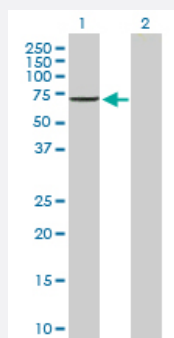
Size 100 uL

Applications



SDS-PAGE Gel

SLC22A8 transfected lysate.



Western Blot

Lane 1: SLC22A8 transfected lysate (59.90 KDa)

Lane 2: Non-transfected lysate.

Specification

Transfected Cell Line 293T

Plasmid pCMV-SLC22A8 full-length

Host Human

Theoretical MW (kDa) 59.9

Quality Control Testing Transient overexpression cell lysate was tested with Anti-SLC22A8 antibody ([H00009376-B01P](#)) by Western Blots.
 SDS-PAGE Gel
 SLC22A8 transfected lysate.
 Western Blot
 Lane 1: SLC22A8 transfected lysate (59.90 KDa)
 Lane 2: Non-transfected lysate.

Storage Buffer

1X Sample Buffer (50 mM Tris-HCl, 2% SDS, 10% glycerol, 300 mM 2-mercaptoethanol, 0.01% Bromophenol blue)

Storage Instruction

Store at -80°C. Aliquot to avoid repeated freezing and thawing.

Applications

- Western Blot

Gene Info — SLC22A8

Entrez GeneID[9376](#)**GeneBank Accession#**[NM_004254](#)**Protein Accession#**[NP_004245.2](#)**Gene Name**

SLC22A8

Gene Alias

MGC24086, OAT3

Gene Description

solute carrier family 22 (organic anion transporter), member 8

Omim ID[607581](#)**Gene Ontology**[Hyperlink](#)**Gene Summary**

The protein encoded by this gene is involved in the sodium-independent transport and excretion of organic anions, some of which are potentially toxic. The encoded protein is an integral membrane protein and appears to be localized to the basolateral membrane of the kidney. [provided by RefSeq]

Other Designations

organic anion transporter 3|solute carrier family 22 member 8

Disease

- [Kidney Failure](#)