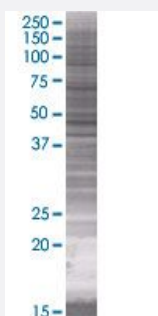


# SLC22A8 293T Cell Transient Overexpression Lysate(Denatured)

Catalog # H00009376-T01

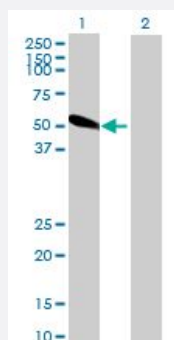
Size 100 uL

## Applications



### SDS-PAGE Gel

SLC22A8 transfected lysate.



### Western Blot

Lane 1: SLC22A8 transfected lysate ( 59.9 KDa)

Lane 2: Non-transfected lysate.

## Specification

**Transfected Cell Line** 293T

**Plasmid** pCMV-SLC22A8 full-length

**Host** Human

**Theoretical MW (kDa)** 59.9

**Quality Control Testing** Transient overexpression cell lysate was tested with Anti-SLC22A8 antibody ([H00009376-B01](#)) by Western Blots.  
SDS-PAGE Gel  
SLC22A8 transfected lysate.  
Western Blot  
Lane 1: SLC22A8 transfected lysate ( 59.9 KDa)  
Lane 2: Non-transfected lysate.

**Storage Buffer**

1X Sample Buffer (50 mM Tris-HCl, 2% SDS, 10% glycerol, 300 mM 2-mercaptoethanol, 0.01% Bromophenol blue)

**Storage Instruction**

Store at -80°C. Aliquot to avoid repeated freezing and thawing.

## Applications

- Western Blot

## Gene Info — SLC22A8

**Entrez GeneID**[9376](#)**GeneBank Accession#**[NM\\_004254](#)**Protein Accession#**[NP\\_004245](#)**Gene Name**

SLC22A8

**Gene Alias**

MGC24086, OAT3

**Gene Description**

solute carrier family 22 (organic anion transporter), member 8

**Omim ID**[607581](#)**Gene Ontology**[Hyperlink](#)**Gene Summary**

The protein encoded by this gene is involved in the sodium-independent transport and excretion of organic anions, some of which are potentially toxic. The encoded protein is an integral membrane protein and appears to be localized to the basolateral membrane of the kidney. [provided by RefSeq]

**Other Designations**

organic anion transporter 3|solute carrier family 22 member 8

## Disease

- [Kidney Failure](#)