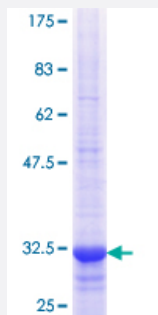


SLC22A8 (Human) Recombinant Protein (Q01)

Catalog # H00009376-Q01

Size 25 ug, 10 ug

Applications



Specification

Product Description	Human SLC22A8 partial ORF (NP_004245.2, 256 a.a. - 325 a.a.) recombinant protein with GST-tag at N-terminal.
Sequence	TPESIRWLVLSGKSSKALKILRRVAVFNGKKEEGERLSLEELKLNQKEISLAKAKYTASDLFRIPMLRR
Host	Wheat Germ (in vitro)
Theoretical MW (kDa)	33.44
Preparation Method	in vitro wheat germ expression system
Purification	Glutathione Sepharose 4 Fast Flow
Quality Control Testing	12.5% SDS-PAGE Stained with Coomassie Blue.
Storage Buffer	50 mM Tris-HCl, 10 mM reduced Glutathione, pH=8.0 in the elution buffer.
Storage Instruction	Store at -80°C. Aliquot to avoid repeated freezing and thawing.
Note	Best use within three months from the date of receipt of this protein.

Applications

- Enzyme-linked Immunoabsorbent Assay
- Western Blot (Recombinant protein)
- Antibody Production
- Protein Array

Gene Info — SLC22A8

Entrez GeneID [9376](#)

GeneBank Accession# [NM_004254](#)

Protein Accession# [NP_004245.2](#)

Gene Name SLC22A8

Gene Alias MGC24086, OAT3

Gene Description solute carrier family 22 (organic anion transporter), member 8

Omim ID [607581](#)

Gene Ontology [Hyperlink](#)

Gene Summary The protein encoded by this gene is involved in the sodium-independent transport and excretion of organic anions, some of which are potentially toxic. The encoded protein is an integral membrane protein and appears to be localized to the basolateral membrane of the kidney. [provided by RefSeq]

Other Designations organic anion transporter 3|solute carrier family 22 member 8

Disease

- [Kidney Failure](#)