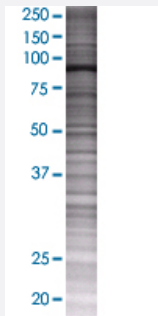


KIF3B 293T Cell Transient Overexpression Lysate(Denatured)

Catalog # H00009371-T01

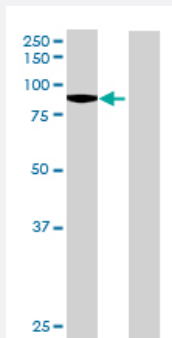
Size 100 uL

Applications



SDS-PAGE Gel

KIF3B transfected lysate.



Western Blot

Lane 1: KIF3B transfected lysate (82.28 KDa)

Lane 2: Non-transfected lysate.

Specification

Transfected Cell Line	293T
Plasmid	pCMV-KIF3B full-length
Host	Human
Theoretical MW (kDa)	82.28
Interspecies Antigen Sequence	Mouse (97); Rat (97)

Quality Control Testing

Transient overexpression cell lysate was tested with Anti-KIF3B antibody ([H00009371-B01](#)) by Western Blots.
SDS-PAGE Gel
KIF3B transfected lysate.
Western Blot
Lane 1: KIF3B transfected lysate (82.28 KDa)
Lane 2: Non-transfected lysate.

Storage Buffer

1X Sample Buffer (50 mM Tris-HCl, 2% SDS, 10% glycerol, 300 mM 2-mercaptoethanol, 0.01% Bromophenol blue)

Storage Instruction

Store at -80°C. Aliquot to avoid repeated freezing and thawing.

Applications

- Western Blot

Gene Info — KIF3B

Entrez GeneID[9371](#)**GeneBank Accession#**[NM_004798.2](#)**Protein Accession#**[ENSP00000364864](#)**Gene Name**

KIF3B

Gene Alias

HH0048, KIAA0359

Gene Description

kinesin family member 3B

Omim ID[603754](#)**Gene Ontology**[Hyperlink](#)**Gene Summary**

The protein encoded by this gene acts as a heterodimer with kinesin family member 3A to aid in chromosome movement during mitosis and meiosis. The encoded protein is a plus end-directed microtubule motor and can interact with the SMC3 subunit of the cohesin complex. In addition, the encoded protein may be involved in the intracellular movement of membranous organelles. This protein and kinesin family member 3A form the kinesin II subfamily of the kinesin superfamily. [provided by RefSeq]

Other Designations

OTTHUMP00000030588|kinesin-like protein KIF3B|microtubule plus end-directed kinesin motor 3B