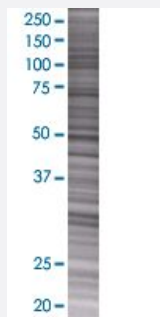


SLC9A3R1 293T Cell Transient Overexpression Lysate(Denatured)

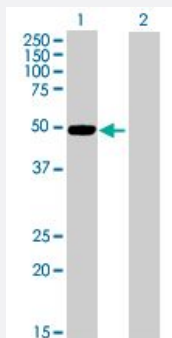
Catalog # H00009368-T01 Size 100 uL

Applications



SDS-PAGE Gel

SLC9A3R1 transfected lysate.



Western Blot

Lane 1: SLC9A3R1 transfected lysate (38.9 KDa)

Lane 2: Non-transfected lysate.

Specification

Transfected Cell Line	293T
Plasmid	pCMV-SLC9A3R1 full-length
Host	Human
Theoretical MW (kDa)	38.9
Interspecies Antigen Sequence	Mouse (86); Rat (87)

Quality Control Testing

Transient overexpression cell lysate was tested with Anti-SLC9A3R1 antibody ([H00009368-B01](#)) by Western Blots.
SDS-PAGE Gel
SLC9A3R1 transfected lysate.
Western Blot
Lane 1: SLC9A3R1 transfected lysate (38.9 KDa)
Lane 2: Non-transfected lysate.

Storage Buffer

1X Sample Buffer (50 mM Tris-HCl, 2% SDS, 10% glycerol, 300 mM 2-mercaptoethanol, 0.01% Bromophenol blue)

Storage Instruction

Store at -80°C. Aliquot to avoid repeated freezing and thawing.

Applications

- Western Blot

Gene Info — SLC9A3R1

Entrez GeneID

[9368](#)

GeneBank Accession#

[NM_004252](#)

Protein Accession#

[NP_004243](#)

Gene Name

SLC9A3R1

Gene Alias

EBP50, NHERF, NHERF1, NPHLOP2

Gene Description

solute carrier family 9 (sodium/hydrogen exchanger), member 3 regulator 1

Omim ID

[604990](#)

Gene Ontology

[Hyperlink](#)

Gene Summary

This gene encodes a sodium/hydrogen exchanger regulatory cofactor. The protein interacts with and regulates various proteins including the cystic fibrosis transmembrane conductance regulator and G-protein coupled receptors such as the beta2-adrenergic receptor and the parathyroid hormone 1 receptor. The protein also interacts with proteins that function as linkers between integral membrane and cytoskeletal proteins. The protein localizes to actin-rich structures including membrane ruffles, microvilli, and filopodia. Mutations in this gene result in hypophosphatemic nephrolithiasis/osteoporosis type 2, and loss of heterozygosity of this gene is implicated in breast cancer

Other Designations

sodium/hydrogen exchanger regulatory factor 1|solute carrier family 9 (sodium/hydrogen exchanger), isoform 3 regulatory factor 1

Disease

- [Asthma](#)
- [Crohn Disease](#)
- [Diabetes Mellitus](#)
- [Genetic Predisposition to Disease](#)
- [Immune System Diseases](#)
- [Inflammation](#)
- [Psoriasis](#)