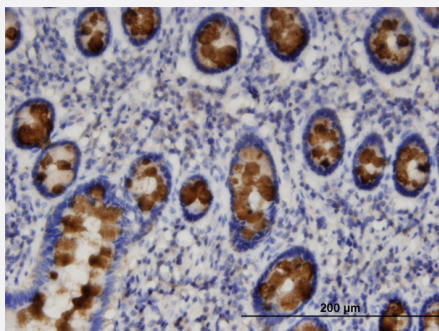


# SLC9A3R1 monoclonal antibody (M02), clone 2B7

Catalog # H00009368-M02

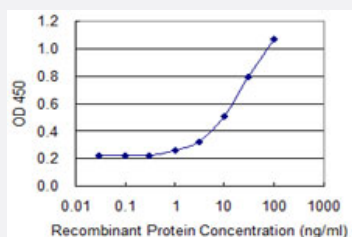
Size 100 ug

## Applications



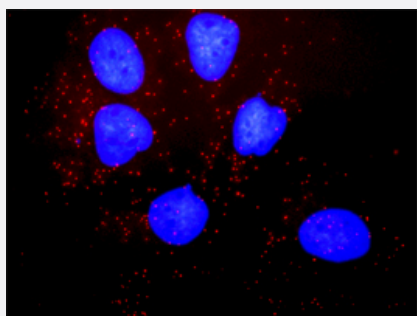
### Immunohistochemistry (Formalin/PFA-fixed paraffin-embedded sections)

Immunoperoxidase of monoclonal antibody to SLC9A3R1 on formalin-fixed paraffin-embedded human small Intestine. [antibody concentration 3 ug/ml]



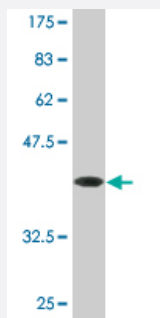
### Sandwich ELISA (Recombinant protein)

Detection limit for recombinant GST tagged SLC9A3R1 is 0.3 ng/ml as a capture antibody.



### In situ Proximity Ligation Assay (Cell)

Proximity Ligation Analysis of protein-protein interactions between PDGFRB and SLC9A3R1. Huh7 cells were stained with anti-PDGFRB rabbit purified polyclonal 1:1200 and anti-SLC9A3R1 mouse monoclonal antibody 1:50. Each red dot represents the detection of protein-protein interaction complex, and nuclei were counterstained with DAPI (blue).



Western Blot detection against Immunogen (37.51 KDa) .

## Specification

<b>Product Description</b>	Mouse monoclonal antibody raised against a partial recombinant SLC9A3R1.
<b>Immunogen</b>	SLC9A3R1 (NP_004243.1, 252 a.a. ~ 358 a.a) partial recombinant protein with GST tag. MW of the GST tag alone is 26 KDa.
<b>Sequence</b>	NGPLPVPFTNGEIQKENSREALAALESPPALVRSASSDTSEELNSQDSPPKQDSTAPSSTS SSDPILDFNISLAMAKERAHQKRSSKRAPQMDWSKKNELFSNL
<b>Host</b>	Mouse
<b>Reactivity</b>	Human
<b>Interspecies Antigen Sequence</b>	Mouse (86); Rat (87)
<b>Isotype</b>	IgG2a Kappa
<b>Quality Control Testing</b>	Antibody Reactive Against Recombinant Protein. Western Blot detection against Immunogen (37.51 KDa) .
<b>Storage Buffer</b>	In 1x PBS, pH 7.4
<b>Storage Instruction</b>	Store at -20°C or lower. Aliquot to avoid repeated freezing and thawing.

## Applications

- Western Blot (Recombinant protein)

[Protocol Download](#)

- Immunohistochemistry (Formalin/PFA-fixed paraffin-embedded sections)

Immunoperoxidase of monoclonal antibody to SLC9A3R1 on formalin-fixed paraffin-embedded human small intestine. [antibody concentration 3 ug/ml]

[Protocol Download](#)

- Sandwich ELISA (Recombinant protein)

Detection limit for recombinant GST tagged SLC9A3R1 is 0.3 ng/ml as a capture antibody.

[Protocol Download](#)

- ELISA

- In situ* Proximity Ligation Assay (Cell)

Proximity Ligation Analysis of protein-protein interactions between PDGFRB and SLC9A3R1. Huh7 cells were stained with anti-PDGFRB rabbit purified polyclonal 1:1200 and anti-SLC9A3R1 mouse monoclonal antibody 1:50. Each red dot represents the detection of protein-protein interaction complex, and nuclei were counterstained with DAPI (blue).

## Gene Info — SLC9A3R1

Entrez GeneID [9368](#)

GeneBank Accession# [NM\\_004252](#)

Protein Accession# [NP\\_004243.1](#)

Gene Name SLC9A3R1

Gene Alias EBP50, NHERF, NHERF1, NPHLOP2

Gene Description solute carrier family 9 (sodium/hydrogen exchanger), member 3 regulator 1

Omim ID [604990](#)

Gene Ontology [Hyperlink](#)

**Gene Summary** This gene encodes a sodium/hydrogen exchanger regulatory cofactor. The protein interacts with a nd regulates various proteins including the cystic fibrosis transmembrane conductance regulator a nd G-protein coupled receptors such as the beta2-adrenergic receptor and the parathyroid hormo ne 1 receptor. The protein also interacts with proteins that function as linkers between integral me mbrane and cytoskeletal proteins. The protein localizes to actin-rich structures including membran e ruffles, microvilli, and filopodia. Mutations in this gene result in hypophosphatemic nephrolithiasi s/osteoporosis type 2, and loss of heterozygosity of this gene is implicated in breast cancer

**Other Designations** sodium/hydrogen exchanger regulatory factor 1|solute carrier family 9 (sodium/hydrogen exchang er), isoform 3 regulatory factor 1

## Disease

- [Asthma](#)
- [Crohn Disease](#)
- [Diabetes Mellitus](#)
- [Genetic Predisposition to Disease](#)
- [Immune System Diseases](#)
- [Inflammation](#)
- [Psoriasis](#)