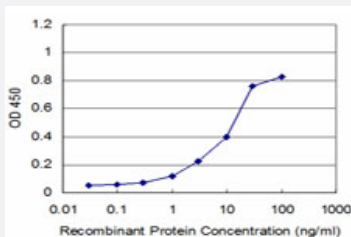


RAB9A monoclonal antibody (M02), clone 4F8

Catalog # H00009367-M02

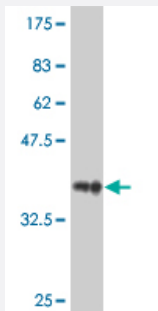
Size 100 ug

Applications



Sandwich ELISA (Recombinant protein)

Detection limit for recombinant GST tagged RAB9A is approximately 1 ng/ml as a capture antibody.



Western Blot detection against Immunogen (36.63 KDa) .

Specification

Product Description	Mouse monoclonal antibody raised against a partial recombinant RAB9A.
Immunogen	RAB9A (NP_004242, 17 a.a. ~ 115 a.a) partial recombinant protein with GST tag. MW of the GST tag alone is 26 KDa.
Sequence	GVGKSSLMNRYVTNKFDTQLFHTIGVEFLNKDLEVDGHFVTMQWDTAGQERFRSLRTPFYRGSD CCLLTFSVDDSQSFQNLSNWKKEFIYYADVKEPE
Host	Mouse
Interspecies Antigen Sequence	Mouse (95); Rat (95)

Isotype	IgG2b Kappa
Quality Control Testing	Antibody Reactive Against Recombinant Protein. Western Blot detection against Immunogen (36.63 KDa) .
Storage Buffer	In 1x PBS, pH 7.4
Storage Instruction	Store at -20°C or lower. Aliquot to avoid repeated freezing and thawing.

Applications

- Western Blot (Recombinant protein)

[Protocol Download](#)

- Sandwich ELISA (Recombinant protein)

Detection limit for recombinant GST tagged RAB9A is approximately 1ng/ml as a capture antibody.

[Protocol Download](#)

- ELISA

Gene Info — RAB9A

Entrez GeneID	9367
GeneBank Accession#	NM_004251
Protein Accession#	NP_004242
Gene Name	RAB9A
Gene Alias	RAB9
Gene Description	RAB9A, member RAS oncogene family
Omim ID	300284
Gene Ontology	Hyperlink
Gene Summary	O
Other Designations	RAB9, member RAS oncogene family