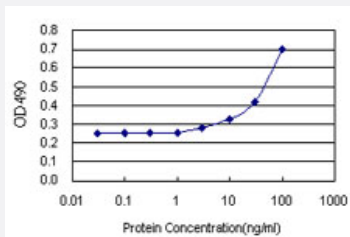


RAB9A (Human) Matched Antibody Pair

Catalog # H00009367-AP11

Size 1 Set

Applications



Sandwich ELISA detection sensitivity ranging from 10 ng/ml to 100 ng/ml.

Specification

Product Description	This antibody pair set comes with a matched antibody pair to detect and quantify the protein level of human RAB9A.
Reactivity	Human
Interspecies Antigen Sequence	Mouse (95); Rat (95)
Quality Control Testing	Standard curve using recombinant protein (H00009367-P01) as an analyte. Sandwich ELISA detection sensitivity ranging from 10 ng/ml to 100 ng/ml.
Supplied Product	Antibody pair set content: 1. Capture antibody: rabbit MaxPab® affinity purified polyclonal anti-RAB9A (100 ug) 2. Detection antibody: mouse monoclonal anti-RAB9A, IgG2a Kappa (20 ug) *Reagents are sufficient for at least 1-2 x 96 well plates using recommended protocols.
Storage Instruction	Store reagents of the antibody pair set at -20°C or lower. Please aliquot to avoid repeated freeze thaw cycle. Reagents should be returned to -20°C storage immediately after use.

Applications

- ELISA Pair (Recombinant protein)

[Protocol Download](#)

Gene Info — RAB9A

Entrez GeneID	9367
Gene Name	RAB9A
Gene Alias	RAB9
Gene Description	RAB9A, member RAS oncogene family
Omim ID	300284
Gene Ontology	Hyperlink
Gene Summary	O
Other Designations	RAB9, member RAS oncogene family