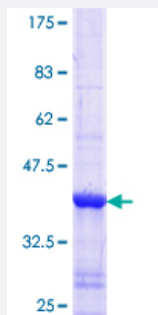


# LONP1 (Human) Recombinant Protein (Q01)

Catalog # H00009361-Q01

Size 25 ug, 10 ug

## Applications



## Specification

<b>Product Description</b>	Human LONP1 partial ORF ( NP_004784.2, 661 a.a. - 761 a.a.) recombinant protein with GST-tag at N-terminal.
<b>Sequence</b>	YVAQEKLAIAERYLVPQARALCGLDESKAKLSSDVLTLIKQYCRESGVRNLQKQVEKVLRKSAVK VSGEAESEVETPENLQDFVGKPVFTVERMYDVTP
<b>Host</b>	Wheat Germ (in vitro)
<b>Theoretical MW (kDa)</b>	36.85
<b>Interspecies Antigen Sequence</b>	Mouse (87); Rat (88)
<b>Preparation Method</b>	<a href="#">in vitro wheat germ expression system</a>
<b>Purification</b>	Glutathione Sepharose 4 Fast Flow
<b>Quality Control Testing</b>	12.5% SDS-PAGE Stained with Coomassie Blue.
<b>Storage Buffer</b>	50 mM Tris-HCl, 10 mM reduced Glutathione, pH=8.0 in the elution buffer.
<b>Storage Instruction</b>	Store at -80°C. Aliquot to avoid repeated freezing and thawing.
<b>Note</b>	Best use within three months from the date of receipt of this protein.

## Applications

- Enzyme-linked Immunoabsorbent Assay
- Western Blot (Recombinant protein)
- Antibody Production
- Protein Array

## Gene Info — LONP1

**Entrez GeneID** [9361](#)

**GeneBank Accession#** [NM\\_004793](#)

**Protein Accession#** [NP\\_004784.2](#)

**Gene Name** LONP1

**Gene Alias** LON, LONP, LonHS, MGC1498, PIM1, PRSS15, hLON

**Gene Description** lon peptidase 1, mitochondrial

**Omim ID** [605490](#)

**Gene Ontology** [Hyperlink](#)

**Gene Summary** This gene encodes a mitochondrial matrix protein in the Lon family of ATP-dependent proteases. A similar E. coli protein regulates gene expression by targeting specific regulatory proteins for degradation. This protein binds a specific sequence in the light and heavy chain promoters of the mitochondrial genome which are involved in regulation of DNA replication and transcription. [provided by RefSeq]

**Other Designations** LON protease|Lon protease-like protein|hLON ATP-dependent protease|mitochondrial lon peptidase 1|protease, serine, 15