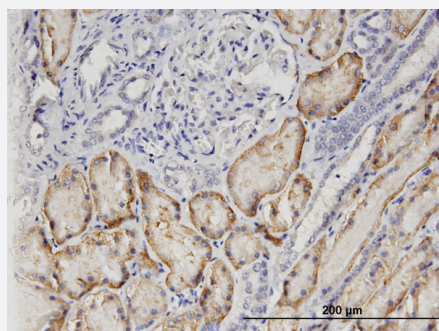


SLC22A6 monoclonal antibody (M05), clone 1F2

Catalog # H00009356-M05

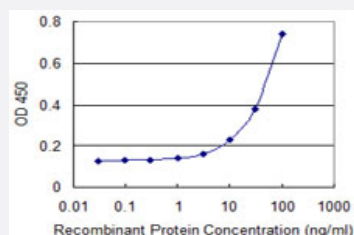
Size 100 ug

Applications



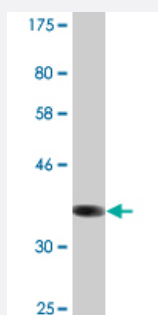
Immunohistochemistry (Formalin/PFA-fixed paraffin-embedded sections)

Immunoperoxidase of monoclonal antibody to SLC22A6 on formalin-fixed paraffin-embedded human kidney. [antibody concentration 3 ug/ml]



Sandwich ELISA (Recombinant protein)

Detection limit for recombinant GST tagged SLC22A6 is 3 ng/ml as a capture antibody.



Western Blot detection against Immunogen (36.63 KDa) .

Specification

Product Description

Mouse monoclonal antibody raised against a partial recombinant SLC22A6.

Immunogen	SLC22A6 (AAH33682, 451 a.a. ~ 550 a.a) partial recombinant protein with GST tag. MW of the GST tag alone is 26 KDa.
Sequence	TMIRQTGMGMGSTMARVGSIVSPLVSMTAELYPSMPLFIYGAVPVAASAVTVLLPETLGQPLPDTVQDLESRKGGKQTRQQQEHQKYMVPLQASAEKNGL
Host	Mouse
Reactivity	Human
Isotype	IgG1 Kappa
Quality Control Testing	Antibody Reactive Against Recombinant Protein. Western Blot detection against Immunogen (36.63 KDa) .
Storage Buffer	In 1x PBS, pH 7.4
Storage Instruction	Store at -20°C or lower. Aliquot to avoid repeated freezing and thawing.

Applications

- Western Blot (Recombinant protein)

[Protocol Download](#)

- Immunohistochemistry (Formalin/PFA-fixed paraffin-embedded sections)

Immunoperoxidase of monoclonal antibody to SLC22A6 on formalin-fixed paraffin-embedded human kidney. [antibody concentration 3 ug/ml]

[Protocol Download](#)

- Sandwich ELISA (Recombinant protein)

Detection limit for recombinant GST tagged SLC22A6 is 3 ng/ml as a capture antibody.

[Protocol Download](#)

- ELISA

Gene Info — SLC22A6

Entrez GeneID [9356](#)

GeneBank Accession# [BC033682](#)

Protein Accession#	AAH33682
Gene Name	SLC22A6
Gene Alias	FLJ55736, HOAT1, MGC45260, OAT1, PAHT, ROAT1
Gene Description	solute carrier family 22 (organic anion transporter), member 6
Omim ID	607582
Gene Ontology	Hyperlink
Gene Summary	The protein encoded by this gene is involved in the sodium-dependent transport and excretion of organic anions, some of which are potentially toxic. The encoded protein is an integral membrane protein and may be localized to the basolateral membrane. Four transcript variants encoding four different isoforms have been found for this gene. [provided by RefSeq]
Other Designations	para-aminohippurate transporter renal organic anion transporter 1 solute carrier family 22 member 6

Disease

- [Bipolar Disorder](#)
- [Genetic Predisposition to Disease](#)
- [HIV Infections](#)
- [Kidney Failure](#)