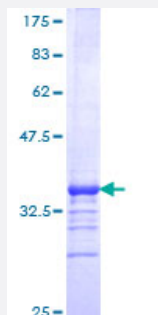


LHX2 (Human) Recombinant Protein (Q01)

Catalog # H00009355-Q01

Size 25 ug, 10 ug

Applications



Specification

Product Description	Human LHX2 partial ORF (NP_004780, 1 a.a. - 76 a.a.) recombinant protein with GST-tag at N-terminal.
Sequence	MLFHSLSGPEVHGVIDEMDRRAKSEAPAISSAIDRGDTETTMPSSISSDRAALCAGCGGKISDRYYL LAVDKQWHMR
Host	Wheat Germ (in vitro)
Theoretical MW (kDa)	34.1
Interspecies Antigen Sequence	Mouse (99); Rat (99)
Preparation Method	in vitro wheat germ expression system
Purification	Glutathione Sepharose 4 Fast Flow
Quality Control Testing	12.5% SDS-PAGE Stained with Coomassie Blue.
Storage Buffer	50 mM Tris-HCl, 10 mM reduced Glutathione, pH=8.0 in the elution buffer.
Storage Instruction	Store at -80°C. Aliquot to avoid repeated freezing and thawing.
Note	Best use within three months from the date of receipt of this protein.

Applications

- Enzyme-linked Immunoabsorbent Assay
- Western Blot (Recombinant protein)
- Antibody Production
- Protein Array

Gene Info — LHX2

Entrez GeneID [9355](#)

GeneBank Accession# [NM_004789](#)

Protein Accession# [NP_004780](#)

Gene Name LHX2

Gene Alias LH2, MGC138390, hLhx2

Gene Description LIM homeobox 2

Omim ID [603759](#)

Gene Ontology [Hyperlink](#)

Gene Summary This gene encodes a protein belonging to a large protein family, members of which carry the LIM domain, a unique cysteine-rich zinc-binding domain. The encoded protein may function as a transcriptional regulator. The protein can recapitulate or rescue phenotypes in Drosophila caused by a related protein, suggesting conservation of function during evolution. [provided by RefSeq]

Other Designations LIM HOX gene 2|LIM homeobox protein 2|OTTHUMP00000022092